



2022 PREMIUM BOOK

*Skamania
County Fair*

AUGUST 17th-20th

Stevenson, WA

Stars & Stripes



Capture the Fair!

Snap a picture of fun at the Skamania County fair
& enter our annual photo contest!

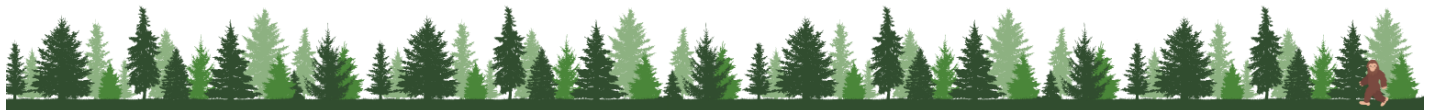


Table of Contents

WELCOME TO THE SKAMANIA COUNTY FAIR	3
Exhibit Hall Entry Dates And Times:	4
General Rules	5
Market Sale	6
Exhibit Hall	7
FLORAL EXHIBITS	8
ARTS, PHOTOGRAPHY & EDUCATION	11
FINE ARTS	11
PHOTOGRAPHY	12
4-H EDUCATION, ART, & PHOTOGRAPHY	13
HOME ECONOMICS	16
BAKING AND FOOD PRESERVATION	18
FOOD PRESERVATION	18
BAKING	21
FOOD PREPARATION	22
SEWING, FIBER ART, AND NEEDLE WORK	23
NEEDLE ARTS	24
CLOTHING & SEWING	25
QUILTING	26
AGRICULTURE & HOME-MADE SPIRITS	27
HOME MADE SPIRITS	31
Animals	32
4-H HORSE DEPARTMENT	32
YOUTH LIVESTOCK	33
All entries	34
BOVINE/CATTLE	34
GOATS	35
SWINE	36
SHEEP	36
YOUTH SMALL ANIMAL	37
RABBITS	37
POULTRY	38
COMPANION ANIMALS	39
FAIR FOOD DRIVE	41
ANNUAL JUNIOR TIMBER CARNIVAL	42
ANNUAL SENIOR TIMBER CARNIVAL	44

WELCOME TO THE SKAMANIA COUNTY FAIR

Visit the 2022 Skamania County Fair and you will experience the tradition of people sharing their knowledge and skills for the preservation and promotion of what's best in America. The vision of hope, industry, and pride at the Fair reflect the best in all of us.

We hope you will take this opportunity to get involved. You can enter an exhibit, help a youngster with theirs, or become one of the many volunteers who make the fair shine. The Skamania County Fair prides itself on being a "free gate" and less commercial fair that offers great family entertainment, an opportunity to reunite with old friends, meet new ones, and a chance to see our history and our future. Embrace good old-fashioned fun and celebrate with us!

David Waymire
Fair Board President



Fair Dates And Times:

Saturday, August 13: 8AM to 5PM
Sunday, August 14: 8AM to 5PM
Wednesday, August 17: Noon to 10PM
Thursday, August 18: 10AM to 10PM
Friday, August 19: 10AM to 10PM
Saturday, August 20: 10AM to 10PM

Special Events:

Open Horse Performance- 9:00am
Open Horse Gaming- 9:00am

***Opening Ceremonies-** 12:00pm

Timber Carnival - 9:00am
Market Sale- 3:00pm

Skamania County Fair Board:

Executive Committee:

David Waymire, Board President
John Mobley, Vice President
Heather Hobbs, Secretary
Donna Heuker, Treasurer

Membership:

Jennifer Crandall	Laken Campbell
Amy Velansky	Tonia Waymire
Ann Leuders	Sarah Callaghan
Sally Bea	Somer Meade
Jennifer Connolly	Alex Hays
Jolene Emerson	

Skamania County Commissioners:

Richard Mahar, District 1
Tom Lannen, District 2
Bob Hamlin, District 3

Skamania Community Events & Rec:

Alex Hays, Events and Cultural Affairs Manager
Sabrina Trulock, Event Specialist

WSU Extension Office:

Hannah Brause, Extension Director
Missy McElprang, 4-H Regional Specialist
Somer Meade, 4-H Program Coordinator
Phoebe Jud, 4-H Mentoring Coordinator

AIMS AND PURPOSES

Skamania County Fair is the single largest event in the county and is the most highly-rated service the county provides. Each year, approximately 20,000 people join us for five days of family activities and entertainment. The goal of the Skamania County Fair shall be:

- ★ To promote, develop, exhibit and improve the wholesome values of agriculture and forestry. Livestock production, business, industry, education and basic life skills for the people of Skamania County.
- ★ To furnish education and training opportunities in such areas as demonstrations, contests, judging and showing.
- ★ To help with the building of good fellowship, good sportsmanship, and good citizenship of young and old.

- ★ To encourage everyone in the area to attend and participate in the Skamania County Fair.
- ★ To provide a good quality and variety of entertainment for the whole family.
- ★ To give rural organizations, our youth and adult citizens an opportunity to exhibit in friendly competition.
- ★ To make the Skamania County Fair self-sufficient and to use the revenue to improve the quality of our fair.
- ★ To develop and update sound short- and long-range plans with measurable objectives for the fair's future growth.
- ★ To provide for the safety of the exhibitor and the general public attending the county fair.
- ★ To provide a place where people from all walks of life can gather at one time in a spirit of joy and brotherhood.

How To Enter Your Exhibits:

Bring your exhibits to the area where they are to be displayed. Complete one entry for each exhibit. Make sure the division and class are accurate and match the premium book information, describe the article as per the wording in the premium book. Animal entries have a separate entry process. Note: This year we will have computers/tablets to assist with entry as we adopt a new system. Volunteers will be present to support with the new technology. Additional information and premium books are available at the Skamania County Fair office. Please provide your full name and mailing address at time of entry, and verify for accuracy.

Exhibit Hall Entry Dates And Times:

Photography, Fine Arts, Youth Arts, Needle Art, Fiber Arts, Clothing, Home Economics, Preserved Foods, Arts and Crafts, & Booth Display Set-up

Saturday,	August 13	9am-3pm
Sunday,	August 14	Noon-7pm

Agriculture Exhibits & Fresh Baked Foods

Monday,	August 15	8am-8pm
Tuesday,	August 16	8am-11am

Floral Exhibits

Tuesday,	August 16	Noon-7pm
Wednesday,	August 17	9am-11am

*No Late Entries will be accepted. Pick-up time is Sunday after Fair at 2:00 pm. Late pickup is available at the Exhibit Hall during the following Monday. All exhibits not retrieved by 5:30 pm on Monday, August 22 will be subject to disposal.

Premiums for All Entries:

Blue Ribbon- \$3 Red Ribbon- \$2 White Ribbon- \$1

*All checks for premiums awarded and not cashed within 90 days of issuance will be considered a donation to the fair board. It is the exhibitor's responsibility to contact the fair board if a premium check is not received or contains an error no later than December 1st. Contact: info@skamaniafair.com.

Age Groups:

The fair board follows 4-H guidelines for youth age groupings. 4-H age groups are based on age at start of 4-H year (October 1st, 2021)

Pr – Primary (Cloverbud) Age 5 – 7

Sr – Senior/Age 14 - 19

A – Adult/ Age 20 - 64

Jr – Junior / Age 8 - 10

Int – Intermediate / Age 11 - 13

SC – Senior Citizen 65+

General Rules

Exhibitors must enter as 4-H or Open Class, one or the other, not both. Once you have entered in one, all of the following entries must be the same. Only still exhibits not previously shown are allowed. Disabled exhibitors are included in all activities. Please notify area superintendents of appropriate accommodations. Superintendents will notify judges of the exhibitor's special needs. 4-H members with disabilities should notify the extension office two weeks prior to events.

The following are PROHIBITED:

- "For Sale" signs on exhibits.
- Dogs on grounds. Exceptions: guide dogs and 4-H show dogs, which must be on a leash.
- Smoking in areas posted "No Smoking."
- Exhibitor must accept stalls, booths, or spaces assigned.
- Early removal of exhibits will result in forfeiture of premium. No removal of animals before the designated time unless authorized by the general livestock superintendent.
- All exhibits must be clearly labeled with exhibitor's name, class and address, using the official entry card.
- One entry per class permitted, except where otherwise specified.
- Decorative materials must be fireproof. Flammable material will not be allowed (greenery must be dipped or sprayed with a solution of 9 oz. Borax and 4 oz. boric acid in one gallon of water).
- An exhibit may be disqualified if rules for that exhibit have not been followed.
- Department superintendent or judge will determine the final classification of entries.
- Exhibitors attempting to, or interfering with, annoying, molesting, influencing the judges, or acting in an impolite manner, shall be ejected and barred from the show.
- Misconduct of any kind during the fair shall cause the exhibitor to forfeit ribbons and cash awards.

Required Paperwork

All exhibitors with animal projects must submit required forms by the deadlines published. Market Registration forms are due in February, Equine Registration is due in April, and all Market & Breed Registrations forms are due at the end of May. These registration forms meet the animal certificate requirement for 4-H and the entry form/green card requirement for fair. See the Pre-Fair Schedule for exact dates.

Posters and Record Books

Livestock: For more information, see Livestock Rules.

Horse Projects: Posters are due at Gorge Games in July. Record books are required and are turned in at Workday on the Thursday before fair.

4-H Record Books are optional and are submitted to the Exhibit Hall by Sunday before fair.

Posters & Fair Mandatory Reports for livestock and small animal projects are due on youth workday.

Live Demonstrations

Exhibitors are encouraged to participate in demonstrations. Please see the 4-H Exhibit Hall Superintendent or 4-H Program Coordinator for demonstration registration and schedule.
(509)427-3932

State Projects

All 4-H projects going to state (animal or still life) must have paperwork completed and returned to 4-H staff on Sunday before leaving the Fair. Do not leave ribbons on projects going to State Fair. State paperwork will be available throughout the week of fair.

Exhibit Hall Building

Youth Division entries will be accepted at the same entry time. Please use sign in sheet at entry desk for Hosting, Live Cooking Demonstrations, Public Presentations, International Exchange & Public Information Displays. *All Educational booths must be up and ready for judging by Tuesday, August 16 at 2:00 pm.

Youth Code of Conduct when at Fair:

As an exhibitor or volunteer you are expected to conduct yourself in a manner that reflects well on your club and yourself. Members and volunteers will demonstrate respect, consideration and courtesy to each other, all adults, all animals and the public. Members and volunteers will respect the property, displays and equipment of others. 4-H Members and volunteers will abide by 4-H National, State, and Skamania County 4-H rules and policies.

Language must be appropriate. Swearing is not considered appropriate. Possession or use of alcohol, drugs or any controlled substance (other than medical prescriptions) is strictly prohibited. Youth members may not use tobacco products at any time while representing fair.

Dress Code When Exhibiting At Fair (In the barns and/or exhibit hall buildings and surrounding show areas):

This code is intended to support overall goals and mission of preparing our youth to be adults and representing oneself as a professional while conducting business. The following applies to all youth members and volunteers including when they are in any project area at the fair. Non-compliance with this dress code may result in the violator being required to leave the event.

- Clothing shall be neat, reasonably clean and in good repair and appearance.
- Articles of clothing are prohibited which: Display gang symbols or profanity; Display products/slogans promoting alcohol, drugs, violence, sex, tobacco; Expose bare midriiffs or bare backs (including when arms are outstretched to the side at shoulder height) or Expose bare chests; Are transparent (see-through); Are halter tops or tube tops.
- Tank tops with straps 1" or wider are permitted.
- No sagging pants or intentionally visible underwear.
- Shorts, skirts and dress length must be no higher than fingertips with arms extended down.
- Closed toe shoes/boots with heel strap or enclosed heel are required in and around animal areas when handling ANY animals or on stall duty. No sandals or flip flops are allowed in barns.

Market Sale

Come enjoy the Skamania County Youth Market Sale, the culmination of months of hard work! The Auction starts at 3:00pm in the Livestock Arena on Saturday.

Watch local youth show off their animal projects and knowledge they've gained at the different animal shows Tuesday-Friday of fair week.

Visit the [Fair website](#) for more information about the market sale & registration.

For more information about the market sale, as well as how to register and pay, please contact the Fair Board:

Office: Rock Creek- Hegewald Center
Address: PO Box 995, Stevenson WA 98648
Email: Info@SkamaniaFair.com



Exhibit Hall

Exhibit Hall Superintendent: Heather Hobbs



CONTESTS, BOOTHS, AND DISPLAYS

(Divisions 101-109)

Join the good old-fashioned fair fun in the Exhibit Hall! Check out the kitchen to see quick and easy recipes using new and old techniques, learn to churn butter while scratch biscuits bake in the oven, and watch live cooking demonstrations! There is more going on outside of the kitchen, too! Come build with legos, make an art project, or watch a fiber spinning demonstration. All led by volunteers. How about you? Inquire about volunteer opportunities in the Fair Office at Hegewald Community Center. 509-427-3980 Be sure to check the daily schedule for contests and competitions in the Exhibit Hall throughout fair!

Division 100: Pie Contest

Friday, August 19

Dust off your apron, roll out your pin, cut up your fruit and flour your tin. Calling all pastry pros and baking-beginners, come share your greatest pie sensation! **Entries are accepted on day of contest between 9:00am-Noon.** Cash prizes will be awarded! 1st Place=\$50, 2nd Place=\$30, 3rd Place=\$20

CLASS

- 1) Fruit 2) Crème Filling 3) Custard Filling

Division 101: Educational Displays & Demonstrations

Share your knowledge with the rest of our community at the Skamania County Fair! Create an educational, instructional, descriptive, or historical display. Please mount your work on foam board or other comparable medium. Create an entry which conveys historical, agricultural, horticultural, animal sciences, or any fair-related topic.

CLASS

- 1) Community 2) Youth 3) Other

Division 102: Booths

Booths must be finished and ready to judge by **7PM on Sunday, August 14.** Please reserve your space with the Fair Office **by August 1st.** Exhibit material for booth display should include only that made, grown, or produced in the community or county. Booth will be judged on the following: **Booth organization:** eye-catching appeal, **Background:** portraying a strong central theme, and **Booth management:** successfully informing the public.

CLASS

- 1) Club 3) Civic
2) Youth 4) Other

Division 103: Capture the Fair Contest

This event is a competition for photographers and artists ending on the Saturday of the fair. During the fair, the photographer or artist goes out and about the fair capturing images. Up to three (3) pictures can be submitted to the Superintendent up until 4:00pm on Saturday. **No fees. Judging is at 5 PM**

Saturday.

Entry Rules: Photographs and paintings compete together.

Media types (continues on pg. 8):

- 1) Color or B & W **Photographs** from digital camera, cell phone. If you need help with printing, contact the exhibit hall superintendent for support.
- 2) **Drawings or paintings** using any fine arts medium, 3" x 4" inches up to 3'x 4' foot supports.

Subject matter: A picture of Skamania County Fair-related subjects from this year's fair only. Title each picture. Judged on capturing the spirit of this year's Skamania County Fair.

Awards: All entries will receive a ribbon and a Champion will be awarded a "Capturing the Fair" ribbon, and be featured in next year's premium book.

Division 104: Garden Tour

Please confirm your interest in having your garden included in this division with the Fair Office **by August 1st**. All Community Garden entries must be current fairgrounds community garden sites. All entered garden plots must be planted, maintained and harvested by members at the Community Garden site. At least 50% of the plants must be vegetables and/or edible herbs. Plants must be established in the garden bed during June and July prior to showing. Plants must be labeled as per the following: **name of plant** (common and species name), **planted from seed or starter**, and **date planted**.

CLASS:

- 1) Individual 2) Group-Community

Division 105: Youth Exhibit Hall Host

All Youth entering an exhibit in the Exhibit Hall shall register to spend a minimum of one hour greeting visitors and helping the superintendent, answering questions from the public and maintaining the area between noon and 8 p.m., Thursday through Saturday. Youth sign up on a master schedule when they bring in exhibits. Report to building manager. Failure to spend one hour in the Exhibit Hall during Fair will result in forfeiture of Exhibit Hall premiums.

CLASS:

- 1) Host 2) Greeter 3) Clean Up Crew

FLORAL EXHIBITS

(Divisions 200 – 214)

Superintendent: Molly Moore

PREPARATION OF CUT FLOWERS RULES:

- **Exhibitor must grow all flowers.** Cut flowers are shown with foliage attached to the stem. **No extra foliage is allowed.** Be careful and neat in removing excess foliage or disbudding, if required. Choosing flowers and plants with healthy foliage is suggested. Plants must have been in the owner's possession for three or more months. No oiling spray or artificial coloring is permitted. **No visible props are allowed.**
- ***Plan Ahead:*** All entries for floral classes should be planned at least a day before show since all flowers need care after cutting to improve their staying qualities. Some advanced grooming, particularly with Dahlias, will be beneficial to the exhibitor.
- ***Cutting and Conditioning:*** Specimens should be cut with a sharp knife or pruners in the early morning or evening, at a long slant, a bit longer than needed. Place immediately in a container of warm water. Do not expose to air. To seal **dahlias**, dip cut in hot water. To seal **poppies**, singe the tip with a flame. Store flowers overnight in a cool, dark place free of drafts.
- ***Grooming Guide:*** Remove foliage below the water line of your vase. 50% of the stem should be underwater. Remove dead or damaged leaves, and disbud single blooms. **Dahlias should have two or four leaves, have no green centers, and should face at a 45-degree angle.** Dahlias should have 3 to 4 true leaves, no spur leaves, no hard green centers, and they should face at a 45 degree angle. Ideally with dahlias, side buds should be pinched off early (not cut) to improve appearance of entry. Grooming is an important factor in judging. **Glads** should be straight, have one leaf and be 1/3 bud, 1/3 half open, and 1/3 fully open. **Petunias** should be a spray and should be named. **Roses** should be 2/3 open.

- **Transporting:** Protect from sunlight and hot or windy conditions. Floral entries in individual containers can be placed in boxes with dividers to protect them from damaging each other or falling over.
- **Containers:** Vases will be provided for all cut flowers. Do not bring expensive vases or containers, and write your name on the bottom of any you would like returned.
- **Labeling: Please label variety on fair entry form below “Description of Entry.”** Naming varieties is highly educational for fair viewers, if possible provide the Latin and common names.

PREPARATION OF ARRANGEMENTS

RULES: Home-grown flowers must be used for Floral Design Class III. No artificial flowers or foliage are permitted. Accessories are only permitted in the Fair Theme and Holiday classes. **Containers:** Please use containers or vases that complement your entry. **Put your name on the bottom of the container.** Do not bring valuable vases.

PREPARATION OF CONTAINER-GROWN PLANTS

RULES:

- **Plants must have been in the owner’s possession for three or more months.** No oiling spray or artificial coloring is permitted. **No visible props are allowed.**
- **Watering:** Water well since container-grown plants are not watered during the fair.
- **Grooming:** Wipe off any traces of spray, dust, or insect damage. Remove any damaged or dead leaves or blooms.
- **Labeling: PLEASE LABEL YOUR PLANT.**
Correct identification is highly educational to the viewing public and a credit in judging.

RIBBONS:

Exhibits will receive blue, red, white, or participation ribbon (no points) for each entry. Premium points will be awarded accordingly.

- TOP IN CLASS--A rosette will be picked from the blue ribbon winners in each class.
- JUDGE’S CHOICE--Two rosettes will be awarded.
- PEOPLE’S CHOICE--A rosette will be awarded daily.

CUT FLOWERS:

- BLOOM: Individual flower, one bloom to a stem.
- SPRAY: Portion of plant with several flowers on one stem, not disbudded.
- SPIKE: Flowers almost stem-less, on a lengthened stalk.
- COLLECTION: Three or more specimens (three stems) of one class, mixed variety and/or color. Judged primarily for educational value, artistic effect secondary. Three matched blooms or sprays per sub-class and color.

Division 200: Container Grown Plants

CLASS:

- | | | |
|-------------------|---------------------|----------------|
| 1) African Violet | 6) Fern | 11) Orchids |
| 2) Bonsai | 7) Fuschia | 12) Succulents |
| 3) Cactus | 8) Geranium | 13) Other |
| 4) Coleus | 9) Hanging Plants | |
| 5) Dish Garden | 10) Mixed Container | |

Division 201: Ornamental Grasses(5 stems) *Display only, no premium awarded

CLASS:

- | | |
|-------------------|-----------|
| 1) Fountain | 3) Ribbon |
| 2) Japanese Blood | 4) Other |

Division 202: Shrubs and Vines *Display only, no premium awarded

CLASS:

- | | |
|--------------------|------------------------------------------------------|
| 1) Berried shrub | 5) Trees, berried or coned, one branch 18" and under |
| 2) Flowering shrub | 6) Vines |
| 3) Ferns | 7) Other |
| 4) Landscape shrub | |

Division 203: Gladioli

CLASS

- | | | |
|-----------------------------------|--------------------------|----------|
| 1) Miniature (less than 2 inches) | 3) Medium (3 – 4 inches) | 5) Other |
| 2) Small (2 – 3 inches) | 4) Large (4 – 5 inches) | |

Division 204: Dahlias

Dahlias should be disbudded and have 1 – 2 sets of leaves. For Dahlia Diagram, see the [fair website](#).

CLASS:

- | | | | |
|-------------------------|------------------------|-------------------|---------------------|
| 1) Anemone | 6) Incurved Cactus | 11) Open-centered | 16) Single |
| 2) Ball | 7) Informal Decorative | 12) Orchid | 17) Stellar novelty |
| 3) Collerette | 8) Laciniated | 13) Peony | 18) Straight Cactus |
| 4) Formal Decorative | 9) Mingon single | 14) Pompom | 19) Water lily |
| 5) Fully double novelty | 10) Mini-ball | 15) Semi-Cactus | 20) Other |

Division 205: Annuals

CLASS:

- | | | |
|---------------|----------------|---------------|
| 1) Amaranthus | 6) Mallow | 11) Sunflower |
| 2) Aster | 7) Marigold | 12) Sweet Pea |
| 3) Clarkia | 8) Petunia | 13) Zinnia |
| 4) Cornflower | 9) Poppy | 14) Other |
| 5) Cosmos | 10) Snapdragon | |

Division 206: Perennials/Biennials

CLASS:

- | | | |
|------------------|---------------|---------------------------------------|
| 1) Carnation | 5) Delphinium | 9) Sedum |
| 2) Chrysanthemum | 6) Hollyhock | 10) Hostas, bloom or 3 uniform leaves |
| 3) Coreopsis | 7) Pansy | 11) Other |
| 4) Daisy | 8) Phlox | |

Division 207: Roses

One bloom or spray per class

CLASS:

- 1) Bloom cycle- one bud, one half-to-three-fourths open, one fully opened, one variety
- 2) Climber
- 3) Floribunda
- 4) Grandiflora
- 5) Hybrid tea spray
- 6) Hybrid tea (disbudded)
- 7) Miniature spray
- 8) Other

Division 208: Floral Educational Display

CLASS:

- | | |
|----------------------------------------------------------------|---------------------------------------------|
| 1) Floral display identifying flowers that attract butterflies | 3) Display identifying herbs and their uses |
| 2) Display identifying flowers that attract hummingbirds | 4) Other display showing Floral/Plant info |

Division 209: Floral Design

CLASS:

- | | |
|-----------------------------------------------|------------------------------------|
| 1) Any Holiday Centerpiece (accessories okay) | 7) My Favorite Color - Your Choice |
| 2) A Walk in the Woods - Greens | 8) Small world |
| 3) Casual Collection of Many Colors | 9) Fairy Gardens |
| 4) Fair Theme (accessories okay) | 10) Wild Flowers |
| 5) Falling into Autumn - Fall Colors | 11) Dried Arrangements |
| 6) Morning Sunshine - Yellows | 12) Other |

Division 210: Floral Collections

CLASS:

- 1) 3 or more of mixed variety and/or color

ARTS, PHOTOGRAPHY & EDUCATION

(Divisions 300 – 305)

General Information

All Exhibitors will be responsible for hanging their entries during the registration process. Please see page 1 for Exhibit Hall entry dates and times. **Amateur:** no work marketed or sold

Semi-Professional; some work marketed **Professional;** Main intent is to teach or sell work

FINE ARTS

Superintendent: Kate Morrison

ENTRY RULES:

Exhibitors may submit up to twelve total entries in this class, all of which may be in one class or different classes. Entries not meeting the standard of the superintendent will be rejected. Late entries are accepted for display only (space permitting). Subject matter of pictures may be abstract/modern, animal, floral, landscape, seascape, marine life, portrait, still life, studies, or other. Each entry must be the work of the Exhibitor, and the following must be attached to the back of the work:

- Title of work
- Artist's name and address
- (Optional) Educational history or story typed on index card
- No premium points for previously displayed exhibits (space permitted for display only).
- Exhibit must be framed and matted.
- Hanging method must support the weight of art work.
- All work must be attached to frame and ready for hanging by string or wire, firmly attached to the back (please no tape of any kind).
- Artwork considered original will consist of work created by exhibitor, work reproduced from own photos, and /or art work created from scrapbooks.
- Fine art replicas or copies must be marked accordingly (Please attach photo of original).
- Special educational entries by professionals and semi-professionals must be exhibitor's own original work only.
- Photographing exhibits is not allowed except by permission of the superintendent.
- Special arrangements for photos of entrant with own artwork can be made with superintendent.
- Exhibitors may submit up to twelve total entries in this class, all of which may be in one class or different classes.

Ribbons:

Judge's decisions are final. Ranking must be noted on entry form. Special Rosette Ribbons:

- Sweepstakes (Top of Show)
- Top of Class
- Judge's Choice
- "Most Original" is judged on originality, creativity and freshness of idea
- Best Amateur
- Best Professional
- Best Semi-Professional
- Best Senior Citizen
- People's Choice
- Superintendent may present a special award rosette for Youth, Amateur, Senior Citizen, Semi-Professional, and Professional sections.
- Voting for People's Choice will end Saturday at 3PM

Division 300: Fine Arts**CLASS**

- | | |
|-----------------------------------------|------------------------------------------|
| 1) Acrylic — Transparent and Opaque | 8) Saws |
| 2) Bronze Casting | 9) Sculpting |
| 3) Charcoal | 10) Water color — Transparent and Gauche |
| 4) Oil | 11) Wood Carving/Sculpting |
| 5) Pastels | 12) Other or Mixed Media |
| 6) Pen and Ink | |
| 7) Pencil — Colored and black and white | |

PHOTOGRAPHY

Superintendent: Lin Melton

Exhibitors may submit up to twelve total entries in this class, all of which may be in one class or different classes. Subject matter of pictures may be animals, architecture, floral, historical, macro and close-ups, panorama, people, scenery, vehicles, or other; doubles or triptychs accepted.

ENTRY RULES:

- All photos must be matted (optional), mounted, framed, and ready for hanging by string, or wire, firmly attached to the back (please, no tape of any kind)
- Entrant must take original photo. Pictures may be black and white or color.
- Print size: not less than 4 X 6 inches. Nothing over poster size (24" x 36").
- Prints and laser prints 4 X 6 inches and larger may be made by commercial processor.
- Slides must be 35mm or super slide, and must bear the name and address of the exhibitor.
- Lens setting, exposure, film used, etc. may accompany entry for benefit and education of fair viewers, but will have no influence on judging.
- No previously entered work allowed.
- Entries to be judged must date from end of Fair
- 2021; that is, photographs taken within the last year from end of fair. Older work will be accepted for "Display Only," educational purposes.

Division 301: Photography

CLASS:

- 1) B & W prints from film or digital cameras
- 2) Color Prints from film or digital cameras
- 3) Other: Color Slides, Laser Prints, prints with special effects created in the dark room or on computer, Triptychs, or Photo Collages.

Division 302: School Projects

- All work must be accompanied by an attached and completed exhibit tag, including student's name and school, or it will be disqualified.
- Projects must be made during the school year just completed.
- Projects in 3-D must be on bases, or have a method of hanging.
- School projects will be for display only, premiums will not be awarded.

CLASS:

- 1) Display only, no premiums awarded

4-H EDUCATION, ART, & PHOTOGRAPHY

(Divisions 303 – 312)

- All entries in all classes must be pictures taken by exhibitor during current 4-H year.
- Entries must be firmly attached to posterboard, matting, or suitable substitute, margins not to exceed 2" with a 1" minimum. Use dry-mount tissue, photo glue, photo stickers, or other suitable substitute for attaching. Poster covering board or similar material must cover the back of the photo. **Framed entries and non-mounted entries will not be accepted.** Small flat hangers that are properly and securely attached to extend above edge of exhibit are acceptable.
- Attach a completed WSU label C0890 to bottom of photo matte, as instructed on the label.
- Please put your name on the back of each exhibit-not on the back of label or other attachment. Incomplete or missing label will result in loss of up to one ribbon placing at judge's option. Note on the bottom margin of the label whether your camera is an SLR, point/shoot, or digital.

Division 303: 4-H Photography

- Entries in **CLASSES 1-11** must be enlargements of black/white or color negatives or colored slides or digital captures that have not been manipulated in any way: 5"x 7", 8"x 10", 8"x12", or 5"x 14". **Photos not these sizes will be ineligible for state.**
- Entries in **CLASS 14** must be enlargements, but no size limit specified. Manipulated digital copies will not be accepted in this class; however unmanipulated digital photos may be cropped and sharpened before printing. Make sure your enlargements are made using traditional methods. See **Digitally Restored Photos Class** for scanned enlargements.

CLASS (continues on pg. 14):

- 1) Scenic
- 2) People
- 3) Animals
- 4) Flower/Nature
- 5) Buildings/Architecture
- 6) Any Subject/Misc.
- 7) Action
- 8) Close Up
- 9) Composition: Special Lighting (i.e. strobe, side, evening, back lighting, timed exposures)
- 10) Composition: Design Elements (i.e. lines, shapes, patterns, textures, special angles, contrasts)
- 11) Composition: Still Life (i.e. inanimate objects set up for photo)
- 12) Composition: Abstracts

- 13) Special Effects (Note special affects you used on CO890)
- 14) Darkroom Skills (all entries in this class to include a 3" x 5" card defining chemicals, exposure, and paper used)

Division 304: 4-H Digital Imaging

Rules: All finished pictures must be no smaller than 5"x7", no larger than 8"x 10". All exhibits must be printed on photographic paper; no copy paper exhibits will be accepted. All images can be sandwiched/cut and paste; retouched/cloned; filters or any other special effects used. Original image must be part of the mounted display, on the front of the exhibit mat for comparison. A typed index card must be part of the mounted display, on the front of the exhibit mat explaining what was done to arrive at the final image. 4-H Photography Label (CO890) must be attached as instructed on the label, and filled out correctly. The original image, finished picture, and index card should be mounted on a display board (poster board or other suitable mounting surface) no larger than 14" x 22".

CLASS:

- 1) Regular film and camera, black & white or color. (Digitally imaged by scanning, then enhanced or manipulated and printed by exhibitor.)
- 2) Digital Capture, black/white or color (Photo taken with a digital camera, then enhanced or manipulated and printed by exhibitor.)
- 3) Scanned enlargements taken by regular- not digital-camera. (Does not follow rules for digital imaging, can have no manipulations of any kind).

Division 305: 4-H Photo Album/Portfolio

Rules: Enlargements not required in this class. Digital photos are accepted. All photos submitted for one year do not have to be from the same type of camera. You can mix digital and regular film photos. Be sure to add a second photo label (CO890) if two or more cameras were used. Albums/Portfolios should be just your best work for the current 4-H year. If you are adding to an old album, be sure to mark the current year. 4-H Photo Label (CO890) is required. Scrapbooks are to contain only photos taken by the exhibitors. One entry per exhibitor allowed in this class.

CLASS:

- 1) First year album—25 prints
- 2) Second year album—30 prints
- 3) Third year album—35 prints
- 4) Fourth year album—40 prints
- 5) Fifth year album—50 prints

Division 306: 4-H Photo Journalism

Rules: **One entry per class allowed in this class.** Digital photos will be accepted in this class provided all photos in the entry are from the same type of camera and printed using the same method. All photos must be of a newsworthy nature. They must be captioned. Include information on who, what, when, and why in each caption. Photos may be black/white or color.

CLASS:

- 1) Photo; one enlargement: size 5"x 7", 8"x 10", 8"x 12", or 5"x 14" matted or mounted on white mat or poster board. Caption should be mounted below the photo on the matted board/poster board.
- 2) Story Board::; 2-4 pictures depicting a single newsworthy story; any size, but total exhibit must not exceed 11" x 14" mounted on white matte board or poster board.
- 3) Album: Minimum of 10 newsworthy photos; published and unpublished work of the exhibitor. Include suggested outlines; if published, include a copy of the publication.

Division 307: 4-H Photo Boards

Rules: One entry allowed per exhibitor per class in this class. This class requires up to 6 photos, black/white or color pictures, each 3½"x 5" or larger- up to 8"x 12" or 5"x 14" that tell a story. Digital photos will be accepted in this class, provided all photos in the entry are from the same type of camera and printed using the same method. Include a title.

(continued on next page)

CLASS:

- 1) Photo Story: A series of 3 to 6 photos that tell a story with a beginning, ending, a title and "referred captions". All photos must be mounted on one board.
- 2) Theme Board: A series of 3 to 6 photos depicting a specific theme. Title required; captions, poems, or other written words are optional; all photos must be mounted on one board.

Division 308: 4-H Digitally Restored Photos

Rules: The original photo may have been damaged in some manner. Judging will be on how well the exhibitor repaired the original photo. **Only one entry per exhibitor in this class.** All finishes pictures must be no smaller than 5" x 7", nor larger than 8" x 10". Entry is to include a 3" x 5" card explaining how the photo was restored and special techniques used. An untouched copy of the original photo must accompany the entry.

CLASS:

- 1) Digitally Restored Photo: Scanned photo taken by regular, not digital camera. Original photo may have been taken by a person other than the exhibitor. The exhibitor will scan the item and then repair the photo using modern day digitizing techniques.

Division 309: 4-H Promotional Photos

Rules: This class is open to all Junior, Intermediate, and Senior 4-H members. The photo must have been taken by the member. There is a maximum of 2 entries per exhibitor in this class. All photos must be captioned. Photos may be used in 4-H promotional materials, brochures, flyers, etc. Refer to general photography rules for information on matting and framing. All finished pictures must be no smaller than 5" x 7", nor larger than 8" x 10". Washington State 4-H reserves the right to retain possession of photos for 4-H promotional purposes.

CLASS:

- 1) 4-H Promotional Photos-Projects
- 2) 4-H Promotional Photos-Community Service
- 3) 4-H Promotional Photos-Activities/Events
- 4) 4-H Promotional Photos-Leadership Development
- 5) All Other Entries

Division 310: 4-H Youth Environment Stewardship

Each exhibit must be properly labeled, mounted, identified and classified where appropriate. One or more display of exhibits may be entered in each class if they are distinctly different.

CLASS:

- 1) 4-H Geology (Ex. rocks, minerals, fossils, etc.)
- 2) 4-H Discovery (Ex. air, energy, forestry, marine life, etc.)
- 3) 4-H Social Sciences (Ex. citizenship, leadership, health, know your government, etc.)
- 4) 4-H Shooting Sports (Ex. Archery, Riflery, or displays)
- 5) Other

Division 311: 4-H Youth Engineering & Technology

Check with Superintendent before setting up your display.

- All entries must attach a 3" x 5" card, to the entry form telling what the item is, its use, what you did, and what was learned from doing the project. Also list the publication title and the page number where the goals are listed for the project.

CLASS:

- 1) 4-H Aerospace
- 2) 4-H Computers

Division 312: 4-H Education

See 4-H Office staff or 4-H Superintendent for scheduling Public Presentations. 4-H Permanent Record Books (optional) are different from the Market & Breed Record Books (required).

- **All Livestock exhibitors**, except Cloverbud/Primary, will complete a Market or Breed record book as detailed in the Livestock Rules.

- **All Livestock exhibitors**, except Cloverbud/Primary, will turn in a new poster on Saturday prior to fair, which is the designated decoration and cleanup day. These will be judged prior to Tuesday and blue ribbon winners will be displayed.

CLASS:

- | | |
|-------------------------------|------------------------|
| 3) 4-H Public Presentations | 5) Breed Record Book |
| 4) 4-H Educational Display | 6) Equine Poster |
| 5) 4-H Permanent Record Books | 7) Livestock Poster |
| 6) Market Record Book | 8) Exhibit Hall Poster |

HOME ECONOMICS

(Divisions 400 – 424)

Arts, Crafts, Creations, and Hobbies

Superintendent: Joan Dudley & Judy Steeneck

Exhibitors may enter a maximum of two entries per division. No duplicate items accepted.

Ribbons

One ribbon for each department in exhibit hall — awarded last day of fair.

- Top in Show for department
- Rosette; Top in Division
- Judge's Choice
- People's Choice

Division 400: Archaeology Artifacts

CLASS:

- | | | |
|---------------|------------|-------------------|
| 1) Arrowheads | 4) Shells | 5) Petrified Wood |
| 2) Artifacts | 3) Fossils | 6) Other |

Division 401: Cone Art

CLASS:

- 1) All entries

Division 402: Feathers

CLASS:

- | | | |
|--------------|------------|----------|
| 1) Fly tying | 2) Hatband | 3) Other |
|--------------|------------|----------|

Division 403: Grasses and Reeds

CLASS:

- | | | |
|------------|------------------|----------|
| 1) Baskets | 2) Wall Hangings | 3) Other |
|------------|------------------|----------|

Division 404: Beading

CLASS:

- | | | |
|-------------|----------------|----------|
| 1) Clothing | 2) Evening Bag | 3) Other |
|-------------|----------------|----------|

Division 405: Crystals, Minerals, Gemstones, & Shells

Be sure to identify types for all classes

CLASS:

- | | | |
|-------------|-------------|----------|
| 1) Crystals | 3) Gemstone | 5) Other |
| 2) Mineral | 4) Shell | |

Division 406: Recyclables

CLASS:

- 1) Educational
- 2) Art
- 3) Plastic

Division 407: Wood

CLASS:

- 1) Hand Lathe
- 2) Toys
- 3) Furniture
- 4) Driftwood
- 5) Other

Division 408: Jewelry

CLASS:

- 1) Glass Beads
- 2) Feathers
- 3) Petrified Wood
- 4) Shell
- 5) Wood
- 6) Grasses and Reeds
- 7) Paper
- 8) Recycled material
- 9) Ceramics
- 10) Beads
- 11) Other

Division 409: Ceramics

CLASS:

- 1) Holiday
- 2) Other

Division 410: Pottery

CLASS:

- 1) All Entries

Division 411: Covered Items

CLASS:

- 1) Dolls
- 2) Stuffed Toys
- 3) Other

Division 412: Glass

CLASS:

- 1) Beads
- 2) Leaded
- 3) Recycled
- 4) Stained, Colored
- 5) Other

Division 413: Macrame

CLASS:

- 1) All Entries

Division 414: Leather

CLASS:

- 1) Carved
- 2) Other

Division 415: Metal

CLASS:

- 1) Sculpture
- 2) Wire Art
- 3) Other

Division 416: Paper

CLASS:

- 1) Origami
- 2) Paper Mache
- 3) Stamping
- 4) Other

Division 417: Scrapbooking

CLASS:

- 1) Theme (one or two pages, please)
- 2) Other

Division 418: Plastics

CLASS:

- 1) Art
- 2) Models
- 3) Other

Division 419: Clothing Embellishment

CLASS:

- 1) Bedazzle
- 2) Puffy Paint
- 3) Tie-Dye
- 4) Other

Division 420: Wax

CLASS:

- 1) Candles
- 2) Other

Division 421: Dried and/or Silk Flowers

CLASS:

- 1) Pressed flowers
- 2) Wreath
- 3) Bouquet
- 4) Floral Arrangement
- 5) Potpourri

Division 422: Poetry

CLASS:

- 1) All Entries

Division 423: Legos®

All Lego projects must be assembled to withstand being handled. All projects must be mounted on an 11" X 11" base, available from the fair office or at time of entry. Factory kits are allowed, but extra points will be awarded for originality. A special ribbon will be awarded for the entry that best fits the fair theme.

CLASS:

- 1) Primary Age Group Must use at least 25 pieces
- 2) Junior and Intermediate Age Group Must use at least 50 pieces
- 3) Senior Age Group Must use at least 100 pieces

Division 424: String Art

CLASS:

- 1) All entries

BAKING AND FOOD PRESERVATION

(Division 500-522)

Superintendents Abigale Reish & Laura Hobbs

FOOD PRESERVATION

All entries must be prepared using Washington State University, US Department of Agriculture, or current Ball or Kerr recommendations. Any entry not complying with such bulletins will be disqualified.

- 4-H Youth must be enrolled in Food Preservation Project
- One jar constitutes an entry; one entry per class number is allowed. One entry per class.
- Any jar may be opened at the judge's discretion.

- All canning entries must be in clean, sealed standard, manufactured pressurized jars such as Ball, Kerr, or Mason. No mayonnaise-type jars or decorative non-canning jars will be accepted.
- Use only non-rust lids and rings on standard jars. Rings MUST be on each lid — do not tighten rings.
- All exhibits must have been processed within the twelve months immediately prior to current Fair.
- All jars must be labeled, and the label must be placed on the lower portion of the jar, below the brand name. Use white 1 x 2-inch labels only.
- Label Must Contain the Following Information: Name of Exhibitor, Class, and class Number, Name of Contents - Date Processed, Type of Pack (hot or cold), Method, Water bath & time, Pressure Cooker, time and pounds of pressure, dial or weighted gauge
- No canned breads of any kind will be accepted.
- Dried foods are to be exhibited in ½ pint, clear, standard canning jars. No plastic bags will be accepted
- Processed foods that have been opened by the judge will be disposed of, for safety reasons. Such empty jars will be available for Exhibitor pick-up.

Division 500: Canned Fruits

CLASS:

- | | | |
|------------------------------|--------------------------|------------------|
| 1) Applesauce | 6) Cherries, pie filling | 11) Raspberries |
| 2) Apricots | 7) Fruit juice | 12) Strawberries |
| 3) Blackberries | 8) Peaches | 13) Other |
| 4) Blueberries/huckleberries | 9) Pears | |
| 5) Cherries | 10) Prunes/plums | |

Division 501: Canned Meat

CLASS:

- | | | |
|------------|------------------|--------------|
| 1) Beef | 4) Salmon | 7) Tuna |
| 2) Pork | 5) Smoked Meat | 8) Wild game |
| 3) Poultry | 6) Smoked Salmon | 9) Other |

Division 502: Canned Vegetables

CLASS:

- | | | |
|-----------------------|------------------------|------------------|
| 1) Asparagus | 6) Greens | 11) Tomatoes |
| 2) Beets | 7) Mixed vegetables | 12) Tomato juice |
| 3) Carrots | 8) Peas | 13) Other |
| 4) Corn, cream style | 9) String beans, green | |
| 5) Corn, whole kernel | 10) String beans, wax | |

Division 503: Dried Fruits

Clear, half-pint, standard jars

CLASS:

- | | | |
|-------------|-------------------------------|------------------|
| 1) Apples | 5) Cherries | 9) Pears |
| 2) Apricots | 6) Fruit leathers (3 entries) | 10) Pineapple |
| 3) Bananas | 7) Grapes | 11) Plums/prunes |
| 4) Berries | 8) Peaches | 12) Other |

Division 504: Dried Meat

Clear, half-pint, standard jars. All meat jerky must be prepared according to the new USDA/ WSU recommendations, available at the Extension Office, tel. 509.427.3932, and or USDA Office.

CLASS:

- | | | |
|---------|------------|-----------------------|
| 1) Beef | 3) Jerky | 5) Wild game |
| 2) Fish | 4) Poultry | 6) Other (1 jar only) |

Division 505: Dried Vegetables and Herbs

Clear, half-pint, standard jars.

CLASS:

- | | | |
|------------|---------------------|-----------------|
| 1) Beans | 6) Garlic | 11) Onions |
| 2) Beets | 7) Mixed vegetables | 12) Tomatoes |
| 3) Carrots | 8) Mushrooms | 13) Zucchini |
| 4) Corn | 9) Parsley | 14) Other herbs |
| 5) Dill | 10) Peas | 15) Other |

Division 506: Freezer Jams and Jellies

CLASS:

- | | | |
|---------------|--------------|---------------|
| 1) Apple | 4) Grape | 7) Strawberry |
| 2) Apricot | 5) Peach | 8) Other |
| 3) Blackberry | 6) Raspberry | |

Division 507: Jams

CLASS:

- | | | |
|----------------|-----------------|----------------|
| 1) Apple | 6) Conserve | 11) Peach |
| 2) Apricot | 7) Fruit butter | 12) Raspberry |
| 3) Blackberry | 8) Huckleberry | 13) Strawberry |
| 4) Blueberry | 9) Marionberry | 14) Other |
| 5) Boysenberry | 10) Marmalade | |

Division 508: Jellies

CLASS:

- | | |
|---------------|-----------------------------|
| 1) Apple | 5) Strawberry |
| 2) Blackberry | 6) Other berry (1 jar only) |
| 3) Grape | 7) Other fruit (1 jar only) |
| 4) Raspberry | |

Division 509: Pickled Fruits & Vegetables

CLASS:

- | | | |
|-------------------|--------------------|----------------------|
| 1) Asparagus | 6) Sweet | 10) Pears |
| 2) Beans | 7) Sauerkraut | 11) Other fruit |
| 3) Beets | 8) Other vegetable | 12) Relish, cucumber |
| 4) Bread & butter | 9) Peaches | 13) Relish, other |
| 5) Dill | | |

Division 510: Remedies and Infusions

Exhibitor must describe the following on a 3x5 note card: How it was made, when it was made, and what it was made with.

CLASS:

- | | |
|-------------|-------------|
| 1) Oils | 3) Tincture |
| 2) Poultice | 4) Other |

Division 511: Sauces & Syrups

CLASS:

- | | | |
|----------------|-------------------------------------|----------|
| 1) Barbecue | 4) Salsa (include recipe) | 7) Other |
| 2) Chili sauce | 5) Spaghetti sauce (include recipe) | |
| 3) Fruit syrup | 6) Tomato sauce | |

BAKING

All exhibits must include the recipe on a 3 x 5 inch white index card with exhibitor's name, division, and class numbers.

- If shortening is not used, please note such on recipe card and entry form.
- Ready mixes will be accepted. Brand name and type of mix must also be included on the index card.
- Entries will be displayed on a sturdy paper plate, or cardboard cut to suitable size.
- Entries may be reduced in size to allow space and to best show the entry.
- Refrigeration is available.
- All entries must be fresh, not previously frozen.

Ribbons and Awards:

-Queen and King of the Kitchen

The exhibitor with the most points will be awarded the prize basket for the King or Queen of the Kitchen. All exhibitors will be eligible to participate. Baked and Preserved Goods will be eligible. Must not have any White Ribbons or Disqualified Entries. Points are as follows:

- 5 Points for Blue
- 3 Points for Red

Additional

Please see the superintendent for rules.

- Sweepstakes
- Top in Class
- Judge's Choice
- Wacky Cookie

Division 512: Breads & Rolls

Breads- submit 1 loaf, Rolls- submit 4

CLASS:

- | | | |
|---------------------------------|---------------------------------|-------------|
| 1) White, yeast bread | 5) Machine bread | 9) Muffin |
| 2) Whole grain, yeast bread | 6) Quick bread (i.e. cornbread) | 10) Biscuit |
| 3) Sourdough bread | 7) Dinner rolls | 11) Other |
| 4) Fruit, Nuts, Vegetable bread | 8) Doughnuts | |

Division 513: Cakes

Half a cake plus 1 slice

CLASS:

- | | | |
|-------------------------------------|---------------------------------|----------|
| 1) Angel food, frosted or unfrosted | 5) Sheet cake, frosted | 9) Other |
| 2) Cheese Cake | 6) Spice cake, frosted | |
| 3) Cupcakes (5) | 7) Sponge, frosted or unfrosted | |
| 4) Layered cake, frosted | 8) Sugarless cake | |

Division 514: Cookies (Six each)

CLASS:

- | | | |
|-------------|----------------------|---------------------------|
| 1) Bar | 4) Pressed | 7) Other (2 entries only) |
| 2) Brownies | 5) Rolled | |
| 3) Drop | 6) Sugarless cookies | |

Division 515: Candy (Six pieces or ¼ pound)

CLASS:

- | | | |
|--------------------|--------------|----------|
| 1) Chocolate fudge | 3) Sugarfree | 5) Other |
| 2) Brittle | 4) Divinity | |

Division 516: Commercial Mix

CLASS:

- | | |
|-----------------------------------|-------------------|
| 1) Bread mix (1 loaf) | 3) Cookie mix (6) |
| 2) Cake mix (½ cake plus 1 slice) | 4) Other |

Division 517: Wacky Cookie (For all ages!)

Home-made or commercial cookies, frosting, or other edible ingredients (baking chips, marshmallows, coconut, etc.--all ingredients must be edible). Be creative and have fun!

CLASS:

- 1) Any

Division 518: Pies (Whole pies)

CLASS:

- | | |
|-------------------------|-------------------|
| 1) Cream pie (1 crust) | 3) Sugar Free pie |
| 2) Fruit pie (2 crusts) | 4) Other |

Division 519: Baked Specialties

CLASS:

- | | |
|-------------------|---------------------------------|
| 1) Decorated cake | 3) Decorated ginger bread house |
| 2) Pastries | 4) Other |

FOOD PREPARATION

Enter as many divisions as you wish, only one per class.

- Food products prepared during an activity are not eligible to be entered in another class.
- Worksheet for the respective contest must be completed in advance and given to the judge before beginning, along with recipe and menu.
- Bread making machines may not be used in any kitchen activity.
- "Foods for All Occasions" meals must be for four people.
- Participants may bring any or all equipment and utensils necessary to complete their food preparation, although the kitchen is well equipped and ready for use.
- Contestants will be helped with operating equipment (range, garbage disposal, microwave oven) as need arises.
- Proper sanitation requires that counter and work area be pre-sanitized by wiping with a bleach water solution (provided).
- Contestants will do necessary cleanup in the kitchen before and after exhibiting. Dishes will be washed and sanitized by the exhibitor only.
- Dress code: slacks, shirt, blouse, skirts or dresses; no shorts, t-shirts or halter tops. Long hair must be tied back.
- All food items used must be purchased at a grocery store or other approved food source.
- No homegrown or home preserved foods and no foods prepared at home may be used. This restriction of food sources is to comply with health department regulations that only food from approved sources may be served to the public.
- For additional information on approved sources of food, contact the extension 4-H office.

Division 520: Table Setting

Each Table Setting will be set up on entry day and will remain out for display through the entire fair. Bring your own dishes and decorations for place setting. Each setting will consist of a table setting for one. Tables are provided for all placings. (size is 2ft x 2 ft). Each table must have a theme, with a menu, and the appropriate setting. A 3"x 5" card with the name, age, what you learned, and how many years you've done this must be included.

(continued on next page)

CLASS:

- | | | | |
|--------------|-----------|----------|----------|
| 1) Breakfast | 2) Dinner | 3) Lunch | 4) Other |
|--------------|-----------|----------|----------|

Division 521: Food for all Occasions**CLASS:**

- | | | | |
|-----------------------|-------------------|--------------------|------------------|
| 1) Breakfast- 2 hours | 2) Lunch- 2 hours | 3) Dinner- 3 hours | 4) Snack- 1 hour |
|-----------------------|-------------------|--------------------|------------------|

Division 522: Microwave Cooking

Participants will prepare and cook a healthy snack. Each contest will be 30 minutes for set, preparation and clean up. (This excludes cooking time.) Participants should prepare one recipe or food product. No place setting will be required. Food is to be displayed on a serving dish. Participants will serve a sample of food to judge and the remaining to public. A recipe and cost breakdown must be provided to the judge. Each participant will be given directions and complete instructions before contest. Each participant should bring a poster (22" x 28") for display.

CLASS:

- | | | | |
|--------------|----------|-----------|----------|
| 1) Breakfast | 2) Lunch | 3) Dinner | 4) Snack |
|--------------|----------|-----------|----------|

SEWING, FIBER ART, AND NEEDLE WORK

(Divisions 600-656)

Superintendents: Mary Davis and Barb Robinson

Entry Requirements

- Exhibitors may submit up to 12 entries per department, all of which may be in the same or different classes.
- Minimum skeins of 100 yards of fine fiber or two (2) ounces, if large grist.
- Skeins will be judged on their general appearance, suitability of fiber-to-yarn technique, and suitability of yarn for final use.
- Skeins should be properly fastened with figure 8 ties and labeled with the following information:
 - Skill level of spinner (beginner, intermediate, or advanced)
 - Fiber content of yarn (i.e., wool type, if known, e.g., cotton, linen, etc.)
 - Number of plies and any other information that will help the judge (e.g., Navajo, ply, type of spinning wheel used, fiber preparation—commercial, combs, drum carder, hand cards, etc.)
 - Possible use(s) of yarn

Ribbons Awarded

- Top in Class
- Judge's Choice
- Top Youth Award
- Superintendent's Award
- People's Choice (Will be awarded on Saturday)
- \$25 cash award from Columbia Fibers Guild for "Best of Hand Woven"

Division 600: Handspun Yarns & Animal Fiber**CLASS:**

- | | | |
|---------|------------|----------|
| 1) Sing | 2) Novelty | 3) Plied |
|---------|------------|----------|

Division 601: Handspun Yarns- Plant**CLASS:**

- | | | |
|-----------|------------|----------|
| 1) Single | 2) Novelty | 3) Plied |
|-----------|------------|----------|

Division 602: Handspun Yarns- Blend

CLASS:

- 1) Single
- 2) Novelty
- 3) Plied

Division 603: Handspun Yarns- Silk

CLASS:

- 1) Single
- 2) Novelty
- 3) Plied

Division 604: Handspun Yarns- Other

CLASS:

- 1) Single
- 2) Novelty
- 3) Plied

Division 605: Handspun Projects

CLASS:

- 1) Accessories — hats, bags, hangings, doilies, gloves, etc.
- 2) Afghans, lap robes, etc.
- 3) Household accessories (i.e. potholder, dishtowel, runner, set of placemats, tablecloth, etc.)
- 4) Wearable apparel
- 5) Other

Division 606: Weaving

Carefully label each article with method of weaving, name of article, and fiber used. This section can include things made on an inkle, harness, card looms, etc. Maybe hand spun yarn or other.

CLASS:

- 1) Accessories--hats, bags, etc.
- 2) Afghans, blankets, spreads
- 3) Apparel
- 4) Household articles place mats, set of pot holders, tablecloths, baskets, etc.
- 5) Rugs
- 6) Wall hangings, tapestry
- 7) Yardage (2 yards or more)
- 8) Other

Division 607: Felting

Displays on technique(s), materials, equipment, types of wools, animals, etc., used in the fiber arts and spinning. Please use poster board or other hard board as backing for ready-to-hang displays.

** Live demonstrations are welcome. Please inform the Fair volunteers, when you enter your projects, so a time and date can be arranged

CLASS:

- | | | |
|-----------------------|------------------------------|--------------------------|
| 1) Wet Felted, small | 4) Dry Needle Felted, small | 7) Other Process, small |
| 2) Wet Felted, medium | 5) Dry Needle Felted, medium | 8) Other Process, medium |
| 3) Wet Felted, large | 6) Dry Needle Felted, large | 9) Other Process, large |

NEEDLE ARTS

Needle Arts include--but are not limited to--knitting, crocheting, quilting, embroidery, cross-stitching, tatting, appliqué, braiding, latch hook, and smocking. Items can only be shown once & entered in 1 category. Work can be done by hand or machine must have been completed in the past year.

- Framed needle art must be ready for hanging.
- All small, flat items are to be neatly mounted on poster board or other light-weight board that is slightly larger than the item.
- Exhibitors may submit up to 12 entries per department, all of which may be in the same or different classes.

- Items may be accepted for display purposes only, at the discretion of the department Superintendent.
- An individual person must accomplish all work, unless entered in the Group Category. Group items should be entered under the Group name with a separate list of all persons that worked on the item.
- All needlework should be blocked.
- Educational displays should be free-standing or ready for hanging.
- Judges have the discretion to decline awarding a prize in any category.

Exhibitors can select from any of the three divisions below, and then will choose from the list of classes below to describe the type of project.

Division 608: Crocheted

Division 609: Knitted

Division 610: Other Process

The following **CLASSES** may be selected for any of the Needle Arts **Divisions** (608-610) listed above:

- | | |
|-----------------------------------------------------------|---------------------------------------|
| 1) Afghan | 11) Rugs |
| 2) Adult sweater | 12) Pillows |
| 3) Baby set (4 pieces) | 13) Bags & purses |
| 4) Child's Sweater | 14) Booties |
| 5) Doily (36 inches or smaller, must be properly mounted) | 15) Mittens & gloves |
| 6) Tablecloth | 16) Scarves |
| 7) Table runner or dresser scarf | 17) Household items (i.e. potholders) |
| 8) Socks | 18) Holiday |
| 9) Hats | 19) Other |
| 10) Doll garments | |

Division 611: Embroidery

CLASS:

- | | |
|-------------------------|-----------------|
| 1) Brazilian embroidery | 6) Crewel work |
| 2) Red work | 7) Needle point |
| 3) Counted cross stitch | 8) Cross stitch |
| 4) Machine | 9) Ribbon |
| 5) Cut work | 10) Other |

CLOTHING & SEWING

- Items can only be exhibited once for points at the Skamania County Fair.
- Put name of pattern company and pattern number on exhibit, or state original design.
- Use 5/8" seam (or serged) unless otherwise specified on your pattern.
- Seams should be finished appropriately
- Special attention to detail
- All items must be the cleaned and pressed. May use commercial pattern. Must have attached card with description of uniqueness of garment, e.g., how pattern design was changed, unique embellishment, combination of fibers/fabrics, etc. May exhibit originally designed, fitted, and constructed garment.
- Criteria for judging will be based on Appearance 30%, Design 45%, and Workmanship 25%.
- Work must be completed in the past year

Division 612: Sewing-Dressy or Tailored

CLASS:

- | | |
|------------------------------------------------|---------------------------------------------|
| 1) Coat or dress jacket or tailored suit lined | 4) Wedding ensemble (minimum of 4 articles) |
| 2) Dressy outfit or dress | 5) Wedding or formal |
| 3) Original outfit | 6) Other |

Division 613: Sewing- Leisure & Work

CLASS:

- | | |
|----------------|-----------------|
| 1) Jacket | 4) Sport Outfit |
| 2) Dress shirt | 5) Slacks |
| 3) Vest | 6) Other |

Division 614: Sewing- Simple Garments

CLASS:

- | | |
|-----------|----------|
| 1) Blouse | 5) Skirt |
| 2) Dress | 6) Vest |
| 3) Robe | 7) Other |
| 4) Shirt | |

Division 615: Sewing- Other

CLASS:

- | | |
|-----------------------|----------------|
| 1) Apron | 6) Cloth purse |
| 2) Costumes | 7) Stuffed toy |
| 3) Doll clothes | 8) Tote bag |
| 4) Doll body | 9) Pillows |
| 5) Doll with clothing | 10) Other |

Division 616: Sewing Machine Arts

CLASS:

- | | |
|---------------------------------------------|---------------------------|
| 1) Bobbin work | 4) Free motion embroidery |
| 2) Cut work | 5) Lace-making |
| 3) Decorative stitches used in a unique way | 6) Other |

QUILTING

Superintendent: Merce Hamlin

- Any individual or group is eligible. Quilted items must have been completed within the last year.
- There is a limit of 2 quilts per division.
- All quilts must contain a filler (bat or fabric) sandwiched between two layers of fabric which are joined with quilting or tying thread. No rigid quilts will be accepted. All entries must be clean, completed, and ready to hang.
- A multiple panel entry will be considered one entry and is limited to one per person. Multiple panels should be entered in the size classification that includes the total dimensions of the panels combined. Multiple entries should be mounted on a base fabric. Each piece must be labeled on back lower left-hand corner.
- A "professional" quilter is one who currently writes, teaches, or quilts for compensation.
- A group quilt is one made by more than two people. List the names of all who worked on the quilt on the entry form.
- The judges reserve the right to re-categorize the entries, or not award all ribbons, and not display any item deemed inappropriate for the Fair.
- The following ribbons will be awarded Judges Choice, People's Choice, Best of Show, and Best Piecing.

- While the utmost care will be taken for each item, the Skamania County Fair is not responsible for loss or damage.

Exhibitors can select from any of the seven divisions below, and then will choose from the list of classes below to describe how the project was made and put together.

Division 650: Miniature Quilt

(90" perimeter max)

Division 651: Wall Hanging Quilt

(200" perimeter max)

Division 652: Lap/Crib Quilt

(260" perimeter max)

Division 653: Medium Quilt

(299" perimeter max)

Division 654: Large Quilt

(300" perimeter max)

Division 655: Miscellaneous

(Tablerunners, pillows, etc.)

Division 656: Group Quilt

(3 or more individuals)

The following **CLASSES** may be selected for any of the quilting **Divisions** (650-656) listed above:

- | | |
|-------------------------------------------|------------------------------------------|
| 1) Machine applique, hand-quilted | 11) Machine-pieced, professional quilted |
| 2) Machine applique, machine-quilted | 12) Machine-pieced, other |
| 3) Machine applique, professional quilted | 13) Hand-pieced, hand-quilted |
| 4) Machine applique, other | 14) Hand-pieced, machine-quilted |
| 5) Hand applique, hand-quilted | 15) Hand-pieced, professional quilted |
| 6) Hand applique, machine-quilted | 16) Hand-pieced, other |
| 7) Hand applique, professional quilted | 17) Other, hand-quilted |
| 8) Hand applique, other | 18) Other, machine-quilted |
| 9) Machine-pieced, hand-quilted | 19) Other, professional quilted |
| 10) Machine-pieced, machine-quilted | |

AGRICULTURE & HOME-MADE SPIRITS

(Divisions 700-762)

Superintendent: Sally Husbands

Please give the correct name of the variety entered. Two varieties in any class, unless otherwise noted. Entries must be clean and free of disease, insects, and/or blemishes. Please bring correct number of exhibits listed in each display. Grains and Forage crops must be neatly tied in bundles or bales. General rules of uniformity, color, size, etc., also apply to fruit. Superintendent may remove exhibits as needed, if spoilage occurs.

SPECIAL RIBBONS

- Junior Jolly Green Gardener- youth who receives the most blue ribbons in ag. department
- Jolly Green Gardener- adult who receives the most blue ribbons in ag. department
- Top in Class

- Judge's Choice
- *MOST CREATIVE DISPLAY OF AN EGG!* -Get ready to use your imagination! A special ribbon will be awarded to winner.

Division 700: Apples

CLASS:

- 1) Any variety, 3 pieces

Division 701: Berries

4 oz. each

CLASS:

- | | | | |
|-----------------|------------------|-----------------|----------|
| 1) Blackberries | 3) Boysenberries | 5) Raspberries | 7) Other |
| 2) Blueberries | 4) Marionberries | 6) Strawberries | |

Division 702: Currants

CLASS:

- 1) Any variety, 4 oz.

Division 703: Grapes

CLASS:

- 1) Any variety, 1 bunch

Division 704: Melons

CLASS:

- 1) Any variety, 1 melon

Division 705: Pears

CLASS:

- 1) Any variety, 3 pieces

Division 706: Quince

CLASS:

- 1) Any variety, 3 pieces

Division 707: Rhubarb

CLASS:

- 1) Any variety, 3 stalks

Division 708: Stonefruit

3-5 pieces

CLASS:

- | | | |
|---------------|------------|-------------|
| 1) Apricots | 3) Peaches | 5) Prunes |
| 2) Nectarines | 4) Plums | 6) Cherries |

Division 709: Tomatoes

CLASS:

- | | |
|-------------------|----------------|
| 1) Cherry (¼ cup) | 3) Slicing (3) |
| 2) Roma (3) | 4) Other (3) |

Division 710- Other Fruit

CLASS:

- 1) Any variety

Division 715: Artichoke

CLASS:

- 1) Any variety

Division 716: Beans

CLASS:

- 1) Snap (8-10 pods)
- 2) Shelling (8-10 pods)
- 3) Shelled & dry (½ pint)
- 4) Shelled, not dry (½ pint)

Division 717: Beets

CLASS:

- 1) Baby, 4, no greater than 1.5 inches
- 2) Table, 4, 1.5-3 inches

Division 718: Broccoli

CLASS:

- 1) Any variety, 1 head

Division 719: Brussel Sprouts

CLASS:

- 1) Any stage, 1 stalk, without root

Division 720: Cabbage

CLASS:

- 1) Any variety, 1 head

Division 721: Carrots

CLASS:

- 1) Baby, bunch of 4, 1 inch diameter
- 2) Bunch of 4, 2 inch diameter

Division 722: Cauliflower

CLASS:

- 1) Any variety, 1 head

Division 723: Celery

CLASS:

- 1) Any variety, 1 bunch

Division 724: Corn

CLASS:

- 1) Pop, 3 ears any stage
- 2) Sweet, 3 ears any stage

Division 725: Cucumbers

3 pieces

CLASS:

- 1) Lemon, 3 pieces
- 2) Pickling, less than 3 inches
- 3) Pickling, more than 3 inches
- 4) Slicing, more than 6 inches

Division 726: Eggplant

CLASS:

- 1) Any variety

Division 727: Garlic

CLASS:

- 1) Any variety, 1 bulb

Division 728: Herbs- Fresh

CLASS:

- 1) Medicinal
- 2) Culinary
- 3) Tea

Division 729: Kale

CLASS:

- 1) Any variety, 1 head

Division 730: Kohlrabi

CLASS:

- 1) Any variety

Division 731: Lettuce

CLASS:

- 1) Any variety, 1 head

Division 732: Onions

CLASS:

- 1) Green 1 bunch
- 2) Dry, 3, any variety
- 3) Other, 3, any variety

Division 733: Peas

CLASS:

- 1) Snap (8-10)
- 2) Sugar (8-10)
- 3) Shelled (2oz)

Division 734: Peppers

CLASS:

- 1) Bell, 2
- 2) Hot, 4
- 3) Sweet, 4
- 4) Other, 2

Division 735: Potatoes

CLASS:

- 1) Any variety, 4

Division 736: Pumpkins

CLASS:

- 1) Any variety, 1

Division 737: Spinach

CLASS:

- 1) Any variety, 1 bunch

Division 738: Squash

CLASS:

- 1) Winter, 1, any variety
- 2) Summer, 1, any variety
- 3) Other, 1-2, any variety

Division 739: Swiss Chard

CLASS:

- 1) 1 plant, minus roots

Division 740: Other Vegetable

CLASS:

- 1) Other

Division 745: Poultry Eggs

Must be Clean and Presentable. All eggs will be weighed, those not meeting the minimum weight will be disqualified. One entry of 6 eggs per class, Maximum of 2 entries.

Weights per half dozen:

– Jumbo (15 oz) – X Large (13.5 oz) – Large (12 oz) – Medium (10.5 oz) – Small (9 oz)

CLASS:

- | | | |
|-------------------|-------------------|--------------------|
| 1) White, small | 6) Brown, small | 11) Other, small |
| 2) White, medium | 7) Brown, medium | 12) Other, medium |
| 3) White, large | 8) Brown, large | 13) Other, large |
| 4) White, X large | 9) Brown, X large | 14) Other, X large |
| 5) White, jumbo | 10) Brown, jumbo | 15) Other, jumbo |

Division 746: Honey

Rules: All entries must be the product of the beekeepers entering them. Exhibit must be produced within the 12 months prior to the fair.

CLASS:

- | | |
|---------------------------------------------|--------------------------------|
| 1) Spun Honey (1 pint standard canning jar) | 3) Full frame- must have stand |
| 2) Cut comb | 4) Section |

Division 750: Green Giants

Green Giant award winner for best example of giant vegetable or fruit. One entry per class is allowed.

CLASS:

- | | |
|--------------------|-----------------------|
| 1) Largest cabbage | 5) Tallest corn |
| 2) Largest fruit | 6) Tallest corn stalk |
| 3) Largest pumpkin | 7) Tallest sunflower |
| 4) Largest squash | 8) Other |

Division 751: Special Exhibits

CLASS:

- 1) Basket, 4 or more, vegetable or fruit varieties
- 2) Educational Display (Three or more varieties: herb, vegetable, or fruit, identified and displayed to make an educational exhibit).
- 3) Educational display- bees/entomology

HOME MADE SPIRITS

Division 760: Beer and Ales

Please bring 2 bottles per entry

Ribbons

- Best of Show
- Reserve Best of Show

CLASS:

- | | | | |
|--------------|--------------|----------|----------|
| 1) Amber ale | 3) Fruit ale | 5) Lager | 7) Wheat |
| 2) Brown ale | 4) Pale Ale | 6) Stout | 8) Other |

Division 761: Liqueurs

Please bring each entry in 1 pint glass container

CLASS:

- 1) Fruit
- 2) Herbs and Spices

Division 762: Wine

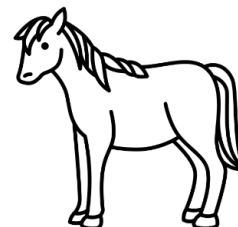
Please bring 1 bottle per entry

Ribbons

- Best of Show (for red and white wine)
- Reserve Best of Show (for red and white wine)

CLASS:

- | | | |
|----------|--------------|--------------|
| 1) Red | 3) Rose | 5) Sparkling |
| 2) White | 4) Non-grape | |



Animals

4-H HORSE DEPARTMENT

(Divisions 800-806)

Superintendent: Jennifer Crandall

All classes will be conducted as indicated in [PNW 587 4-H Horse Project and PNW 4-H Horse Contest Guide](#). Rider should convey the impression of effective and easy control and will be judged on equitation, performance of horse, and general horsemanship. State 4-H Horse rules will apply except as stated.

The Horse Department follows 4-H fitting and showing livestock rules.

- All horses in barn may be picked for 4-H horse judging contest and groom squad. Any exhibitor who refuses without adequate reason may forfeit premium money.
- In order to qualify for State Fair in horse division, 4-H member must have shown showmanship at county level with the horse she/he is taking to State Fair.
- A paid trainer will not ride an exhibitor's horse 90 days prior to fair. Exception: A trainer may mount a horse to correct a problem or safety issue.
- Novice rider classes will also be held during the fair.

Awards: Champion rosettes to Junior, Intermediate, and Senior Champions in all classes, at judge's discretion. Novice riders receive red, white, blue ribbons.

Division 800: 4-H Basic Skills (All 4-H horse exhibitors must participate in both classes)

CLASS:

- | | |
|----------------|-----------------|
| 1) Showmanship | 2) Herdsmanship |
|----------------|-----------------|

Division 801: 4-H Novice

Rules and Guidelines will be followed from [publications](#) EM4714, EM4689 and EM4727.

CLASS:

- | | | |
|---------------------|-----------------------|----------|
| 1) Fitting and Show | 3) English Equitation | 5) Trail |
| 2) West Equitation | 4) Novice Bareback | |

Division 802: 4-H Performance

CLASS:

- | | | |
|------------------------|-----------------------|----------------|
| 1) Bareback Equitation | 3) English Saddleseat | 5) Trail Horse |
| 2) Western Equitation | 4) English Huntseat | |

Division 803: 4-H Western Games

CLASS:

- | | | |
|----------------------|-------------------------|------------------------|
| 1) Showmanship | 4) Two Barrel Flag Race | 7) International Flags |
| 2) Texas Barrel Race | 5) Idaho Figure 8 Stake | |
| 3) Pole Bending | 6) Pole Key Race | |

Division 804: 4-H Groom Squad

CLASS:

1) All Entries

Division 805: 4-H Horse Judging

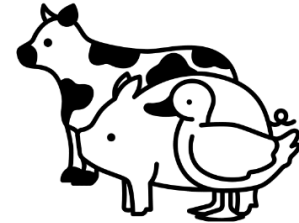
CLASS:

1) All Entries

Division 806: 4-H Hunter Hack

CLASS:

1) All Entries



YOUTH LIVESTOCK

(Divisions 1000-1405)

Barn Manager: David Waymire

Designations:

- “Livestock” refers to the following: dairy cattle, beef cattle, horses, sheep, dairy and meat goats, and swine.
- “Small animals” refer to rabbits, turkeys, chickens, waterfowl, and covies.
- “Companion Animals” refer to dogs, cats, llamas, pack goats and novelty goats.
- Artificially altering the natural conformation and structure of an animal is strictly prohibited at the fair. Every exhibitor bringing animals to the fair represents the animal as being free from all unnatural alteration.
- Livestock Exhibitors will participate in fitting and showing in each and every species they are exhibiting.

HERDSMANSHIP

Animal Exhibitors are expected to perform herdsmanship for each breed of animal they bring to the fair.

No premiums will be paid for herdsmanship.

- Superintendents will assign individual herdsmanship responsibilities.
- Exhibitors will perform herdsmanship in any area of the barn assigned.
- Schedules will be posted in the barns.
- Duties will include answering questions from the public, watering and cleaning-up when necessary, to encourage good care and display of animals in the barn.
- Exhibits will be inspected at least once a day.
- Condition of wash racks will be included in herdsmanship scores.
- Management will designate grooming areas.

Division 312: 4-H Education

Note: 4-H Permanent Record Books (optional) are different from the Market & Breed Record Books (required).

- **All Livestock exhibitors**, except Cloverbud/Primary, will complete a Market or Breed record book as detailed in the Livestock Rules.
- **All Livestock exhibitors**, except Cloverbud/Primary, will turn in a new poster on Saturday prior to fair, which is the designated decoration and cleanup day. These will be judged prior to Tuesday and blue ribbon winners will be displayed.

(continued on the page below)

CLASS:

- | | |
|-------------------------------|------------------------|
| 1) 4-H Public Presentations | 5) Breed Record Book |
| 2) 4-H Educational Display | 6) Equine Poster |
| 3) 4-H Permanent Record Books | 7) Livestock Poster |
| 4) Market Record Book | 8) Exhibit Hall Poster |

Division 1999: Livestock Judging

Superintendent : Deborah Mansfield

All Livestock Exhibitors must participate

CLASS:

- 1) All entries

Division 1000: Youth Market Sale

Market Sale Committee: David Waymire, Emily Higley, Kaitlyn Johnson, Kari Johnson

CLASS:

- 1) All entries

BOVINE/CATTLE

Superintendent: Deborah Mansfield

Ribbons:

- Champion Female by Breed (ribbon only)
- Grand Champion Female All Breeds (ribbon only)
- Champion Male by Breed (ribbon only)
- Grand Champion Male All Breeds (ribbon only)

Division 1100: Beef

CLASS:

- 1) Heifer Calf
- 2) Yearling Heifer
- 3) Aged Cow, 2 years and older
- 4) Cow with calf
- 5) Bull Calf, 6 months or younger
- 6) Best pair, 2 animals any sex and/or bull calf
- 7) Feeder Steer
- 8) Fit & Show

BREED:

Angus
Cross Breeds
Hereford
Limousin
Other pure breeds (shown by breed)

Division 1101: Dairy

CLASS:

- 1) Bull Calf, under 6 months
- 2) Heifer Calf under 6 months
- 3) Senior Heifer Calf, 6-12 months
- 4) Heifer, 12-18 months
- 5) Heifer, 18 months & over, not in milk
- 6) Cow, 2 years
- 7) Cow, 3 years
- 8) Cow, 4 years
- 9) Cow, 5 years
- 10) Fit & Show

BREED:

Ayrshire
All other breeds (shown by breed)
Brown Swiss Holstein
Guernsey
Holstein
Jersey
Milking Shorthorn

GOATS

Superintendents: Kaitlyn and Kari Johnson

Division 1110: Meat Goats

NO BUCKS OR WETHERS WILL BE SHOWN

Ribbons:

- Champion Female Purebred
- Champion Female Percentage
- Overall Champion Female Meat Goat

CLASS:

- 1) Jr Doe (Never Kided), 0-6 months
- 2) Jr Doe (Never Kided), 6-12 months
- 3) Sr. Doe (Kided), 12-24 months
- 4) Sr. Doe (Kided), 2-3 years
- 5) Sr. Doe (Kided) 3 years and older
- 6) Dam & Daughter
- 7) Fit & Show

BREED:

Purebred/Full Blood
Percentage

Division 1111: Dairy Goats

NO BUCKS WILL BE SHOWN

Ribbons:

- Champion Jr and Sr Goat by breed
- Overall Champion Jr and Sr Doe, all breeds combined
- Overall Champion Senior Doe, all breeds combined
- Grand Champion Goat

CLASS:

- 1) Dry doe under 1 year
- 2) Doe over 1/under 2/Never in Milk
- 3) Does under 2 years, in milk
- 4) Does over 2 & under 3 years, in milk
- 5) Does over 3 & under 5 years, in milk
- 6) Does over 5 years, in milk
- 7) Dam in milk, and daughter, any age
- 8) Fit & Show

BREED:

Alpine
Nubian
Toggenburg
Lamancha
Sannen
All other Purebreds
Crossbreeds

Division 1112: Novelty Goats (Companion)

NO BUCKS WILL BE SHOWN

CLASS:

- 1) Junior and Senior wether
- 2) Junior and Senior doe
- 3) Dam and progeny
- 4) Champion Goat by Breed
- 5) Champion Goat all Breeds
- 6) Fit & Show

BREED:

Pygmy Goat
Pygora Goat
Nigerian Dwarf

Division 1113: Driving and Pack Goats (Companion)

See fair schedule for driving & pack goat show

(continued on next page)

CLASS:

- 1) Wether under 1 year
- 2) Wether 1-3 years
- 3) Wether over 3 years
- 4) Does under 1 year
- 5) Does 1-3 years
- 6) Does over 3 years
- 7) Pack Goat Obstacle Course

BREED/TYPE:

Beginner: Any Age-over 15 miles trail experience under 4 years of age
 Experienced: Over 100 miles trail experience- at least 4 years of age
 Harness Goat Precision Driving
 Fit & Show

Division 1114: Market Goat**CLASS:**

- 1) Market Goat
- 2) Fit & Show

SWINE

Superintendents: Jenna Mobley & Jasmine Waymire

Division 1120: Market Swine**NO BOARS WILL BE SHOWN****CLASS:**

- 1) Full Breed
- 2) Cross Breed
- 3) Fit & Show

SHEEP

Superintendent: Emily Higley

Rules:

- Dual-purpose breeds are judged on ability to produce lambs with desirable carcass and wool production.
- Wool breeds judged 60% on wool and 40% on conformation (wool length appropriate to breed).
- Wool will be divided into following types- fine wool - medium wool - coarse wool - primitive

Ribbons:

- Champion female by Breed
- Grand Champion Female
- Champion male by Breed
- Grand Champion Male

Division 1400: Sheep**CLASS:**

- 1) Ram lamb, under 1 year
- 2) Ewe lamb, under 1 year
- 3) Yearling ewe
- 4) Aged ewe (over 2 years)
- 5) Ewe lambs, pair
- 6) Ewe and progeny
- 7) Whether – (Wool Breed class only)
- 8) Fit & Show

BREED:

Shropshire
 Suffolk
 Columbia
 Corriedale
 Romney
 Natural Colored
 Crossbreeds

Division 1401: Fleece

Fleece must be from sheep owned by the exhibitor and represent the current year's growth.

- Exhibitors are limited to 2 entries per class.
- All fleeces must be correctly skirted, processed and rolled. Dirty, unprocessed fleece will not be accepted for judging or display.

- Fleece may be tied with paper twine or displayed in a clear plastic bag. Down may be displayed in a wooden box or basket.
- The judge may reassign entries to categories as appropriate.
- One Champion and one Reserve Champion will be chosen from each class.
- One Grand Champion and one Reserve Champion will be chosen from the best overall fleece.

CLASS:

- | | |
|-------------------------------|--------------------------|
| 1) Sheep Down (meat breeds) | 6) Llama, white |
| 2) Sheep Fleece (wool breeds) | 7) Alpaca, white |
| 3) Lamb Down | 8) Llama, natural color |
| 4) Lamb Fleece | 9) Alpaca, natural color |
| 5) Natural Color Fleece | |
| 6) Fit & Show | |

Division 1402: Market Sheep

CLASS:

- | | |
|-----------------|---------------|
| 1) Market Sheep | 2) Fit & Show |
|-----------------|---------------|

YOUTH SMALL ANIMAL

(Divisions 1500- 1807)

Superintendent: Cori Bohm

RABBITS

Rules:

- A tattoo or other permanent marker must be placed in rabbit's left ear. Permanent marker is acceptable. Mark or Tattoo must be in ear at time of Vet Check.
- A rosette ribbon will be awarded to the champion of each breed (3 entries in breed required for rosette ribbon). Overall best of show and overall best opposite will be chosen as top rabbits.
- All rabbits are to be shown by breed.
- Exhibitors may have no more than two market pens. Review market exhibitor rules for clarification..
- All animals will be judged according to ARBA breed standards.
- Exhibitors are allowed only one cross bred animal. This animal will only be shown in fitting and showing.

Division 1500: Rabbits

Breeds as recognized by the American Rabbit Breeders Association. Crossbred, Pet Quality, and Neutered Rabbits will be shown for fitting and showing only.

CLASS:

- | | |
|--------------------------------|-----------------------------|
| 1) Junior buck, under 6 mos. | 5) Senior buck, over 8 mos. |
| 2) Junior doe, under 6 mos. | 6) Senior doe, over 8 mos. |
| 3) Intermediate buck, 6-8 mos. | 7) Fit & Show |
| 4) Intermediate doe, 6-8 mos. | |

Division 1501: Market Rabbits

CLASS:

- | | |
|---------------|---------------|
| 1) Market Pen | 2) Fit & Show |
|---------------|---------------|

Division 1600: Cavies

CLASS:

- | |
|--------------------------------------|
| 1) Senior Boar, 6 mos. (over 32 oz.) |
|--------------------------------------|

BREED:

American

- 2) Senior Sow, 6 mos. (over 32 oz.)
- 3) Intermediate Boar, 4-6 mos. (22-32 oz.)
- 4) Intermediate Sow, 4-6 mos. (22-32 oz.)
- 5) Junior Boar, up to 4 mos. (12-22 oz.)
- 6) Junior Sow, up to 4 mos. (12-22 oz.)
- 7) Fit & Show

Teddy
 Abyssinian
 Peruvian
 Silkie Class
 Texel
 Other
 Crossbred, Pet Quality or Neutered

Division 1700: Exotics

Gerbils, Hamsters, Snakes, Ferrets, Birds, Reptiles, Rats & Mice

Rules:

- Cages, tanks or containers must be in good condition.
- Decorations are encouraged, but pet must be in full view.
- NO fitting and showing in this class.

CLASS:

- 1) Display Only

POULTRY

Rules:

All poultry will be judged to American Poultry Association or American Bantam Association Standards.

- An exhibitor may only have two market pens.
- Each exhibitor will be in fitting and showing in one division only.
- All birds must have numbered leg bands.
- Exhibitors are allowed only one cross bred animal. This animal will only be allowed to be shown in fitting and showing.

Division 1800: Chickens

CLASS:

- 1) Male bird over one year, standard bantam
- 2) Female bird over one year, standard bantam
- 3) Male bird under one year, standard bantam
- 4) Female bird under one year, standard bantam
- 5) Pen of 3 (non-market), standard bantam
- 6) Fit & Show

Division 1801: Turkeys

Shown by breed only.

CLASS:

- | | |
|------------------------------|-------------------------------|
| 1) Male bird over one year | 4) Female bird under one year |
| 2) Female bird over one year | 5) Pen of 3 (non-market) |
| 3) Male bird under one year | 6) Fit & Show |

Division 1802: Ducks

Shown by breed only. Crossbred or Pet Quality will be shown for fitting and showing only.

CLASS:

- | | |
|------------------------------|-------------------------------|
| 1) Male bird over one year | 4) Female bird under one year |
| 2) Female bird over one year | 5) Pen of 3 (non-market) |
| 3) Male bird under one year | 6) Fit & Show |

Division 1803: Geese

Shown by breed only.

CLASS (continued on pg. 39):

- 1) Male bird over one year
- 2) Female bird over one year
- 3) Male bird under one year

- 4) Female bird under one year
- 5) Pen of 3 (non-market)
- 6) Fit & Show

Division 1804: Other Poultry

CLASS:

- 1) Male bird over one year
- 2) Female bird over one year
- 3) Male bird under one year
- 4) Female bird under one year
- 5) Fit & Show

BREED:

Guinea fowl
Peafowl
Other

Division 1805: Pigeons

CLASS:

- 1) Young Cock
- 2) Young Hen
- 3) Old Cock
- 4) Old Hen
- 5) Fit & Show

BREED:

Fancy
Rare
Sporting
Squab
Utility

Division 1806: Market Chickens

CLASS:

- 1) Market Pen
- 2) Fit & Show

Division 1807: Market Turkeys

CLASS:

- 1) Market Turkey
- 2) Fit & Show

COMPANION ANIMALS

(Divisions 1900-2010)

Please check the fair schedule for all shows and related activities. For Pack Goat & Novelty Goat information, see GOATS on pg. 35.

Division 1900: Llamas/Alpacas

Shown by breed/variety only

CLASS:

- 1) Llama
- 2) Alpaca

Division 2000: 4-H Dogs

RULES:

We encourage mixed breeds as well as pedigreed dogs to enter our event. Everyone will compete in Herdsmanship, Showmanship, one Obedience Level, and Judging. Agility is optional. At least one additional class (“lots”) will be selected from the list below.

- All dogs entered must be well mannered, social, healthy and free of fleas and ticks.
- The Fair Vet will check each dog at 8 a.m. on the day of the event. Missing vet check will result in disqualification. In order to protect all the dogs, documentation must be presented to show that each dog has had the required rabies and kennel cough vaccinations.
- Female dogs in heat may be shown in doggie diapers. Notify superintendent upon arrival.

- All dogs will be on leash while at the Dog Event, unless participating off-leash in the ring in an obedience class or agility.
- All dogs will be attended at all times by a 4-H member or a competent substitute.
- Dogs are not to be anywhere on the Fairgrounds except at the Dog Event. Taking a dog in any of the barns is cause for dismissal and forfeiture of ribbons and trophies.
- All dogs will be benched for public viewing until the close of the event.
- All dogs are to be kept and walked in designated areas only.
- No dog is to be disciplined during competition. Harsh treatment of any dog will result in the 4-H member's exclusion.
- Scoring for all classes will be based on [WA State 4-H Dog Guidelines](#).

CLASS:

- | | | |
|-----------------|--------------------|--------------------|
| 1) Herdsmanship | 6) Advanced novice | 11) Brace |
| 2) Showmanship | 7) Graduate novice | 12) Guide dogs |
| 3) Judging | 8) Open | 13) Team Obedience |
| 4) Pre-novice | 9) Graduate open | |
| 5) Novice | 10) Veteran | |

Division 2001: Rally

CLASS:

- | | | |
|-----------|-------------|--------------|
| 1) Novice | 2) Advanced | 3) Excellent |
|-----------|-------------|--------------|

Division 2002: Agility

CLASS:

- | | | |
|---------------|-----------|--------------|
| 1) Elementary | 3) Novice | 5) Excellent |
| 2) Pre-Novice | 4) Open | |

Division 2003: Jumpers Agility

CLASS:

- | | |
|--------------------------|-----------------------|
| 1) Pre-Novice w/o Weaves | 3) Open w/Weaves |
| 2) Novice w/Weaves | 4) Excellent w/Weaves |

Division 2010: 4-H Youth Cats

Rules:

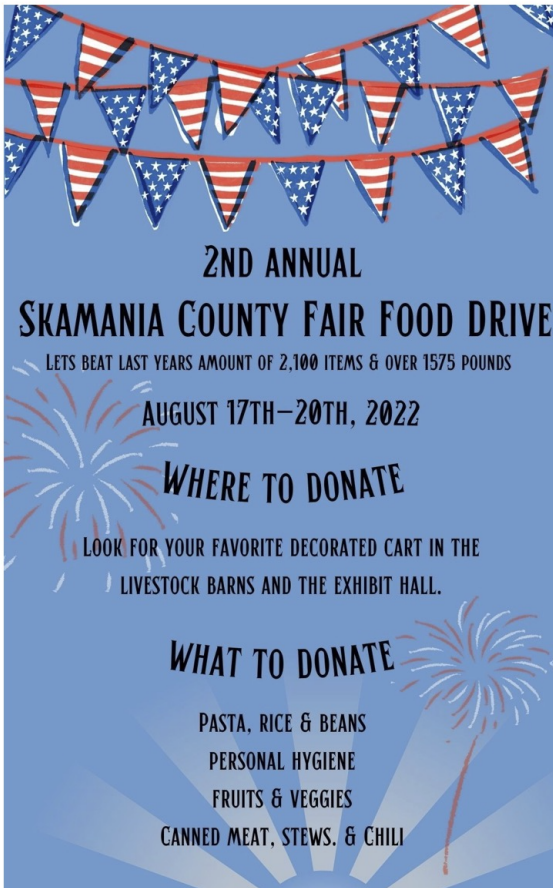
Exhibition is in the Hegewald Center. Exhibitors may enter only one cat. Exhibitors must enter Herdsmanship, Fitting and Showing, and one Class.

- Exhibitors have the option to enter Decorated Cages and Judging Contest.
- Exhibitors are responsible to care for their own cat and see that someone is on duty at all times when cats are on display. Cats must be on display from 9 am to 5 pm, an eight-hour minimum.
- No pregnant or nursing cats may be entered.
- Fitting & Showing reference for Skamania County Judges will be the EM4810.
- Cages will be furnished for exhibitors needing one. All sides of the cage may be decorated, however, the front view must exhibit cat at all times. In addition, a table skirting is encouraged.
- Veterinarian will check all cats at 8:30 am the day of the show. Vet check slip must be presented for entry.
- Exhibitors must present proof of current rabies vaccination by a licensed veterinarian.
- The veterinarian-provided document of rabies vaccination must contain the following information:
 - Date of most recent vaccination
 - Cat name or ID and age
 - Brand or type of vaccine
 - Veterinarian's signature and license number
- Cats should be vaccinated against feline panleukopenia, feline rhinotracheitis, calicivirus and leukemia viruses and chlamydia – at local veterinarian's recommendation.

- Please note that the Judging Contest is required at county level if 4-H exhibitor is to be eligible to participate in the State Fair Judging Contest. (Only intermediates and seniors are eligible at State level.)
- One Grand and one Reserve Champion will be selected from each of the classes below.

CLASS:

- | | |
|------------------------------|---------------------------------------------|
| 1) Fitting and Showing | 6) Household Pets, Short Hair |
| 2) Judging | 7) Senior Cats (Cats 10 years and older) |
| 3) Decorated Cages | 8) Kittens (Between 4 mos. & 8 mos. of age) |
| 4) Purebred Cats | 9) Herdsmanship |
| 5) Household Pets, Long Hair | |



FAIR FOOD DRIVE

We are excited to announce the return of our fair food drive. All donations will go to local food banks as we give back to the community that helps us put on this wonderful event each year.

Below is a list of most needed items for collection/donation. You can bring your items to any of the barns or the Exhibit Hall. Each day of fair we will have focus items and you can also find a small horse trailer in front of the Exhibit Hall for additional donations!

Focus Items:

Wednesday August 17th:

Dried goods-pasta, beans, & rice

Thursday August 18th:

Non-food items for personal hygiene (shampoo, toothbrush, woman/infant supplies)

Friday August 19th:

Fruits and vegetables

Saturday August 20th:

Proteins, meats, stews, chilis

As you make your plans to attend the fair, please consider bringing along an item to donate and help us give back to those in need!

ANNUAL JUNIOR TIMBER CARNIVAL

Friday, August 19th at 9am

Superintendents: Margie Grimmer & Rani Ferguson



These activities are open to all youth to develop physical, teamwork skills and give the participants an opportunity to act out skills they have only read about. The classes put the participant in the role of logger or forest fire fighter and offer the fun of recreation while teaching forestry skills, recognizing that timber is the main agricultural activity of Skamania County and a rich part of our local heritage.

SKILLS AND TECHNIQUES (developed by lot): A Green Participant Ribbon will be awarded to each participant and a first, second, and third place ribbon will be awarded in each lot.

LOTS

Under 5 years old obstacles (register by 8:30am)

9:00 am - 10:00 am

- 1) Pine cone toss
- 2) Bucket of water race (fastest time event)
- 3) Mini log throw

Age 6-9 obstacles (register by 9:30am)

10:00 am - 11:30 pm

- 1) Ring toss
- 2) Mini keg toss
- 3) Burlap sack race

Age 10-14 obstacles (register by 11:30am)

11:45 pm - 1:00 pm

Ladies and Gentlemen will be judged separately.

- 1) Obstacle pole
- 2) Keg toss
- 3) Hatchet Throw
- 4) Choker set
- 5) Boom stick/ Log Roll (if time allows)

Age 15-17 obstacles (register by 12:30pm)

1:00 pm - 2:30 pm

Ladies and Gentlemen will be judged separately.

- 1) Keg toss
- 2) Axe Throw
- 3) Obstacles pole
- 4) Choker set
- 5) Boom stick/ Log roll (if time allows)

Annual Junior Timber Carnival Waiver Form

(There is no entry fee)

Participant Name: _____ Age: _____

Circle: MALE FEMALE Date of Birth: _____

Address: _____ City: _____

State: _____ Zip: _____ Phone: _____

WAIVER: I understand that the Skamania County Fair does not provide insurance to their participants. I certify that I am physically and mentally able to participate in the Junior Timber Carnival. In addition, I hereby release and discharge Skamania County, Its actions, claims or demands that I, my heirs, distributes, guardians, legal representatives or assigns now have or may hereafter have for injury, death, or damage resulting from my participation in this Junior Timber Carnival.

Participant Signature: _____

In Reference to the Junior Timber Carnival, since the participant is under age 18 at the time he/she executes this agreement, then the participant's parent or guardian must read and agree to the Release by signing below.

I _____, am the lawful parent and/or guardian of the above named minor who has my permission to participate in the Junior Timber Carnival. I have read and agree to this Release, and will, by the execution of this agreement, also agree to not make any claims or take action against Skamania County, its appointed and elected officials, agents and employees harmless from all liability if the named minor, or his/her estate pursues any claims or actions against the County, its appointed and elected officials, agents and employees.

Parent Signature: _____

Under 5 years old obstacles

- Pine cone toss
- Bucket of water race (fastest time event)
- Mini log throw

Age 6-9 obstacles

- Ring toss
- Mini keg toss
- Burlap sack race

Age 10-14 obstacles

- Obstacle Course
- Keg Toss
- Hatchet Throw
- Choker Set
- Boom Stick/Log Roll (if time allows)

Age 15-17 obstacles

- Keg toss
- Axe Throw
- Obstacle pole
- Choker set
- Boom stick/ Log Roll (if time allows)

ANNUAL SENIOR TIMBER CARNIVAL

Friday, August 19 at 6pm - (Continued Saturday, August 20 at 1pm)

Superintendent: Laken Campbell



The Skamania County Timber Carnival is an event designed for the amateur participant. The officials have the right to disqualify any contestant who they judge to be unable to compete in an orderly manner.

RULES:

- Entry fee is \$3.00 per event, with a maximum of \$20.00 for seven or more events.
- All Around Entries must be paid for by 5pm Friday August 20.
- All entries fees must be received prior to the event.
- The receipt and entry form must be given to the superintendent in order to compete.
- No alcoholic beverages allowed in the Timber Carnival Area.
- At the beginning of each event, rules will be explained.
- Steel toe boots must be worn on horizontal log chop - Lot 10.
- Contestants must be 18 years of age or older, except 16 years for log rolling and boom stick race.

- Order in which contestants compete will be assigned, except in Horizontal Log Chop; contestants will draw for position

AWARDS:

- All Around Logger and Loggerette;
 - Men must enter all events except Keg Throw to qualify.
 - Ladies must enter all events, including Keg Throw to qualify.
- Cash prizes through fifth place in each event.

○ First Place	\$25
○ Second Place	\$20
○ Third Place	\$15
○ Fourth Place	\$10
○ Fifth Place	\$5

LOT

- 1) Men's Axe Throw — Axe must be double-bitted, weigh a minimum of 2½ pounds, have a minimum length of 24 inches and a maximum of 5 inch width blade. If contestant steps over line, no points will be awarded for that throw.
- 2) Women's Axe Throw — If contestant steps over the line, no points will be awarded for that throw. Axe must be double-bitted.
- 3) Men's Obstacle Pole — If contestant steps over the line, no time will be awarded.
- 4) Women's Obstacle Pole — If contestant steps over the line, no time will be awarded.
- 5) Men's Beer Keg Throw — If a contestant steps over line, that throw will not be counted. The best out of two throws will be taken. (Lot does not count for All-Around Points)
- 6) Women's Beer Keg Throw — If contestant steps over line, that throw will not be counted. The best out of two throws will be taken.
- 7) Powder Puff Choker Setting — Same as men's choker setting, except women may go around center log instead of over it, and time will start when hand leaves log.
- 8) Choker Setting — At your own risk, any type of shoe or boot may be worn. Time will start when foot touches ground and stop when hand touches center log. Nubbin must be through front side of bell.

- 9) Horizontal Log Chop — Single or double-bitted axe may be used. Not designed for professional competition.
- 10) Log Load Wrapping — Time will start when hand leaves cab guard and stop when hand touches cab guard. Wrappers must be between lines on front side of load.
- 11) Team Misery Whip — Oiler may use wedges but Oiler cannot touch saw. NO M-tooth saws will be allowed.
- 12) Jack and Jill Misery Whip — wedges may be used by oiler but oiler cannot touch saw. NO M-tooth saws will be allowed
- 13) Men's Log Roll — At your own risk, any type of shoe may be worn. Single Elimination, first person in water will be eliminated.
- 14) Women's Log Roll — At your own risk, any type of shoe may be worn. Single Elimination, first person in water will be eliminated.
- 15) Men's Boom Stick Race — At your own risk, any type of shoe may be worn. Any contestant who falls in the water three (3) times will be disqualified.
- 16) Women's Boom Stick Race — At your own risk, any type of shoe may be worn. Any contestant who falls in the water three (3) times will be disqualified.

Annual Senior Timber Carnival Waiver Form

(REGISTRATIONS ARE DUE BY 5pm on August 19)

Participant Name: _____ Age: _____
Circle: MALE FEMALE Date of Birth: _____ Phone: _____
Address: _____ City: _____
State: _____ Zip: _____ FEE: \$ _____

WAIVER: I understand that the Skamania County Fair does not provide insurance to their participants. I certify that I am physically and mentally able to participate in the Senior Timber Carnival. In addition, I hereby release and discharge Skamania County, its actions, claims or demands that I, my heirs, distributes, guardians, legal representatives or assigns now have or may hereafter have for injury, death, or damage resulting from my participation in this Timber Carnival. I further agree to fully indemnify and hold Skamania County, its appointed and elected officials, agents and employees harmless from all liability.

Participant Signature: _____ **Date:** _____

Parent/Signature if Participant in under 18: _____

Please check each event you will be participating in.

- | | |
|-------------------------------------|-------------------------------------|
| _____ 1. Men's Axe Throw | _____ 9. Horizontal Log Chop |
| _____ 2. Women's Axe Throw | _____ 10. Log Load Wrapping |
| _____ 3. Men's Obstacle Pole | _____ 11. Team Misery Whip |
| _____ 4. Women's Obstacle Pole | _____ 12. Jack and Jill Misery Whip |
| _____ 5. Men's Beer Keg Throw | _____ 13. Men's Log Roll |
| _____ 6. Women's Beer Keg Throw | _____ 14. Women's Log Roll |
| _____ 7. Powder Puff Choker Setting | _____ 15. Men's Boom Stick Race |
| _____ 8. Choker Setting | _____ 16. Women's Boom Stick Race |