

**Americans with Disabilities Act (ADA)
ADA Transition Plan for the Public Right-of-Way**



Appendix G

Public Engagement Strategy and Findings

May 2024

Prepared by Transportation Solutions, Inc.





Swift Water Senior Newsletter

March / April 2024

Skamania County

Senior Services

710 SW

Rock Creek Drive

PO Box 369

Stevenson, WA 98648

(509) 427-3990

TTY 1-800-833-6384

CALENDAR OF EVENTS

MARCH

3/10 Daylight Savings

**3/14 Hood River
Shopping Trip**

3/15 Birthday Lunch

3/17 St. Patrick's Day

3/31 Easter

APRIL

**4/11 Hood River
Shopping Trip**

4/15 Tax Day

4/19 Birthday Lunch



<https://www.facebook.com/SkamaniaSeniors>

AARP Foundation Free Tax Help

Stevenson Community Library

Tax Assistance Offered for Low Income Seniors from 11am – 4pm @ the Stevenson Community Library. Call 509-427-5471 for an appointment.

Walk-ins are also welcome

Saturdays in March: 2, 9, 16, 23 & 30

Saturdays in April: 6 & 13

MEDICARE SAVINGS PROGRAMS

The Medicare Savings Program (MSP) can provide assistance with premium costs, copayments, deductibles, and co-insurance for low income individuals. Please call 509-427-3994 to set up an appointment to apply!

MSP Income Guidelines:

\$1,660 per month single / \$2,239 per month couple

Extra Help with Rx Part D Income & Resource Guidelines:

\$1,843 per month single / Resources allowed single \$16,660

\$2,485 per month couple / Resources allowed couple \$33,240

ADA Barrier Survey & Public Workshop

Skamania County Public Works is developing an ADA (Americans with Disabilities Act) Self-Evaluation and Transition Plan for the Public Right-of-Way focused on removing barriers to accessibility at curb ramps, sidewalks, pedestrian street crossings, and transit stops within County limits.

Take the **ADA Barrier Survey** at <https://arccg.is/1iaODH1>.

Attend the ADA Transition Plan Virtual Public Workshop

When: Tuesday, March 26, 2024, from 6-7pm

Where: Zoom meeting information available on the County's website at <https://www.skamaniacounty.org/departments-offices/public-works/ada-transition-plan>

Who: County residents, members of the disability community, and those who work closely with persons with disabilities are welcome.

If you have questions or would like to request an accommodation to participate, please contact ADA Transition Plan Project Manager, Sadi' Stouder-Pettenger, at 509-427-3912 or sadi@co.skamania.wa.us

Public Workshop

Americans with Disabilities Act (ADA) Public Right-of-Way Transition Plan

Skamania County

Tuesday, March 26, 2024
6:00 – 7:00 pm



Workshop Hosts

County Staff - Skamania County Public Works Department

Sadi' Stouder-Pettenger, County Engineer
David Waymire, Public Works Director

Consultant Staff - Transportation Solutions, Inc.

Jennifer Salemann, Planner
Victor Salemann, Engineer

Virtual Public Workshop

Online Platform

- We plan to address questions or comments when you see the following message:

Raise Hand or Respond in Chat Box

- You may enter questions into the **Chat Box** at any time.
- There will be more time for questions at the end.

Agenda

6:00 – 6:10: PART 1 – INTRO

Highlight Americans with Disabilities Act (ADA) Transition Plan purpose

6:10 – 6:50: PART 2 – PUBLIC RIGHT-OF-WAY FACILITIES

- **Share findings** of existing ADA accessibility barriers
- **Listen to your experiences** with ADA barriers
- **Listen to your preferences for prioritizing** ADA barriers for removal

6:50 – 7:00: PART 3 – MAKING A PLAN

WHAT BROUGHT YOU HERE TODAY?

Raise Hand or Respond in Chat Box

PART 1

ADA TRANSITION PLANS 101

What should an ADA Transition Plan do?

- Identify accessibility barriers
- Describe methods used to remove accessibility barriers
- Provide a barrier removal schedule
- Identify public official responsible to implement plan

Types of Barriers under Title II (Local & State Governments)

Physical Barriers

- Public right-of-way (curb ramps, sidewalks, transit stops) **INCLUDED IN THIS PLAN**
- County buildings, parks, paved shared-use trails, and accessible parking to be addressed at a future date

Programmatic Barriers

- Public services, programs, and activities – **POLICIES AND PROCEDURES INCLUDED IN THIS PLAN**

PART 2

PUBLIC RIGHT-OF-WAY (PROW) FACILITIES

PROW Facilities

PROW Facilities Addressed in this ADA Transition Plan

- Curb ramps
- Sidewalks and Driveway Interface with Sidewalks
- Transit Stops
- Accessible Pedestrian Signals (this plan sets up County's Policy)

PROW Facilities to be Addressed at a Future Plan Update

- Accessible Parking (to be evaluated with associated building and park facilities)

ADA-Compliant Physical Features in Skamania County Public Right-of-Way

Curb Ramps

(Salmon Falls
Park & Ride)



Sidewalks (Carson)



Transit Stop Features (Carson)



Potential Future ADA-Compliant Physical Features in Skamania County Public Right-of-Way

Accessible Pedestrian Signal (APS)

None currently
exist in Skamania
County



Rectangular Rapid Flashing Beacon (RRFB)

None currently
exist in Skamania
County



Existing Public Right-of-Way Barriers in Skamania County

Non-Compliant Curb Ramps

Fair or Better - **Green**



Poor - **Yellow**



Non-Compliant Curb Ramps cont'd

Very Poor - Orange



Missing - Red



Missing/Outdated Detectable Warning Surfaces

Compliant Truncated Domes



Outdated Diamond Aggregate



No Detectable Warning Surface



Non-Compliant Sidewalks

Fair or Better - **Green**



Poor - **Yellow**



Non-Compliant Sidewalks cont'd

Very Poor - Orange



Non-Compliant Transit Stops

Boarding and Alighting Areas and Approach Slopes



LISTENING SESSION #1

What public right-of-way barriers do you experience?

Please Raise Hand or Respond in Chat Box

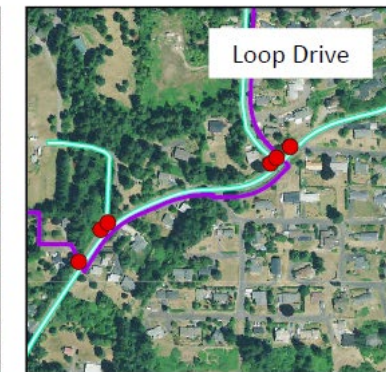
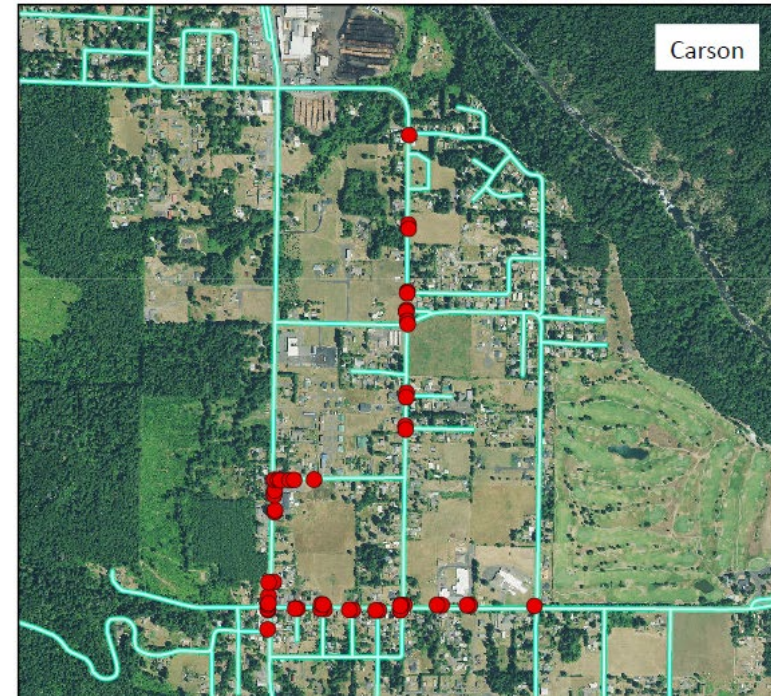
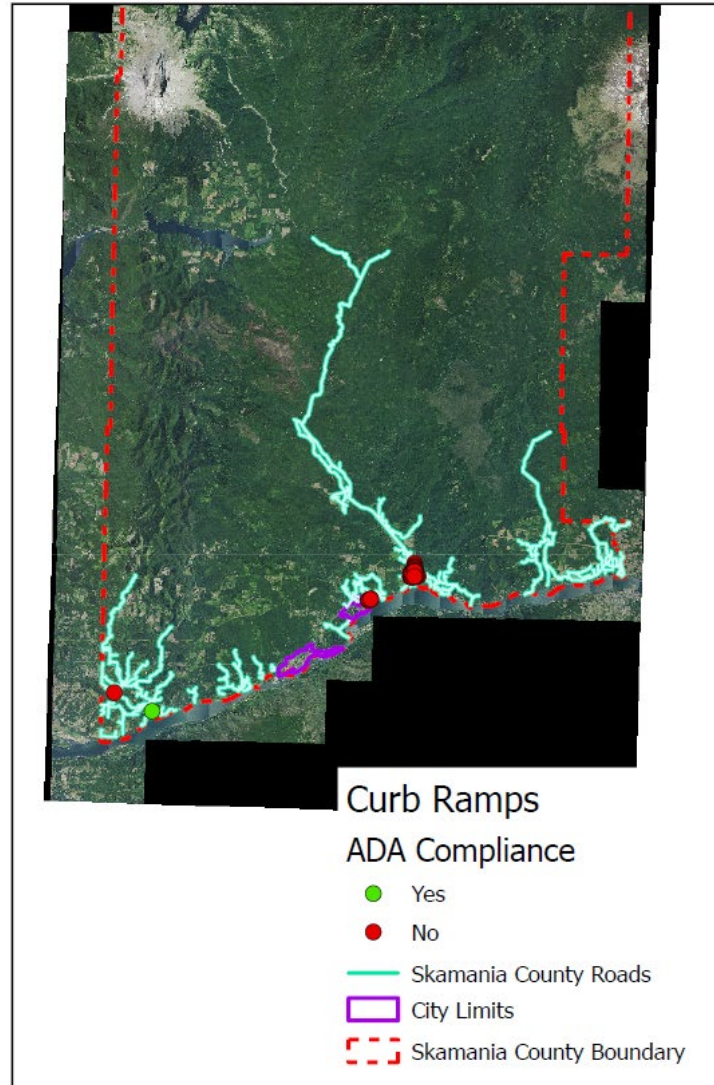
- Curb ramps
- Sidewalks
- Pedestrian crossings
- Pedestrian pushbuttons
- Parking
- Other?

Countywide Public Right-of-Way Inventory Maps

Curb Ramp ADA Compliance Map

Total Inventory

- 58 ramps
- 2% ADA-compliant
- 98% non-compliant

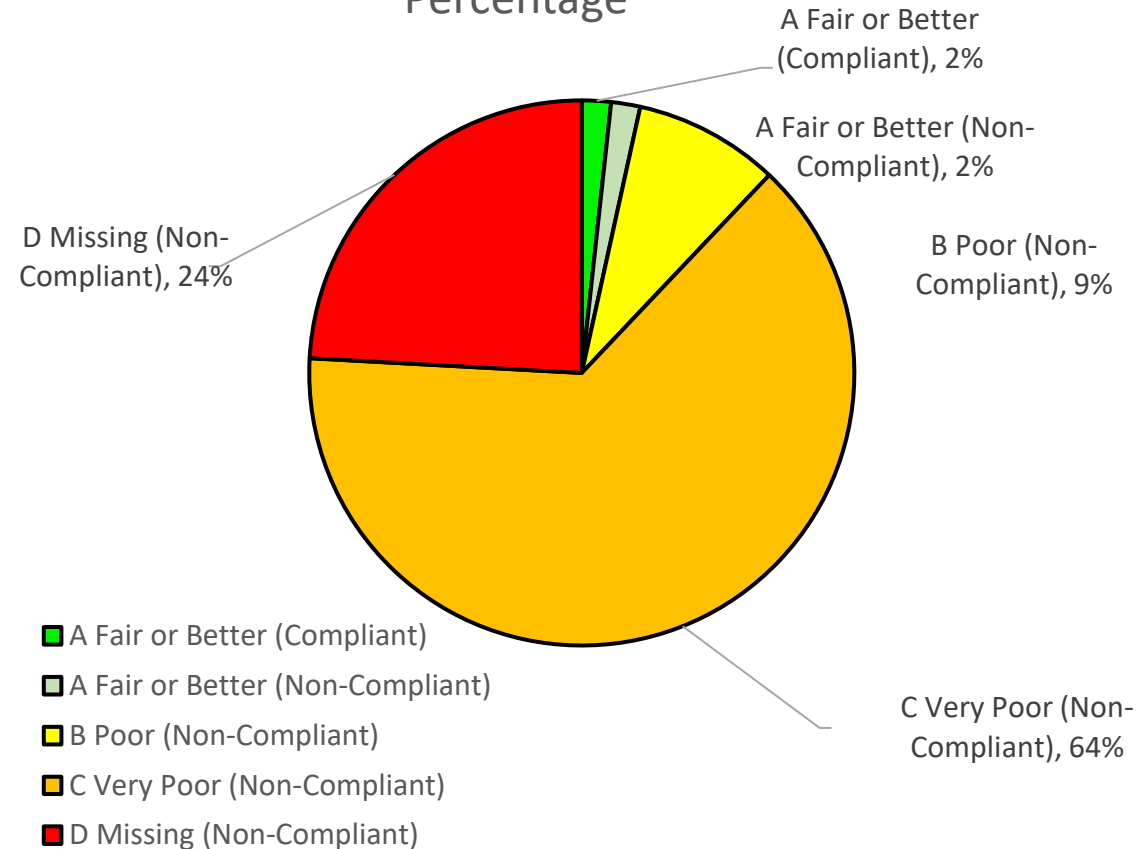


Curb Ramp Condition

Grading System for Functionality

- Fair or Better
- Poor
- Very Poor
- Missing

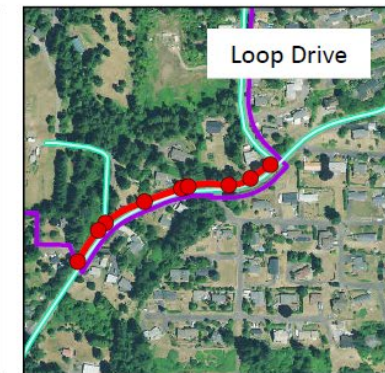
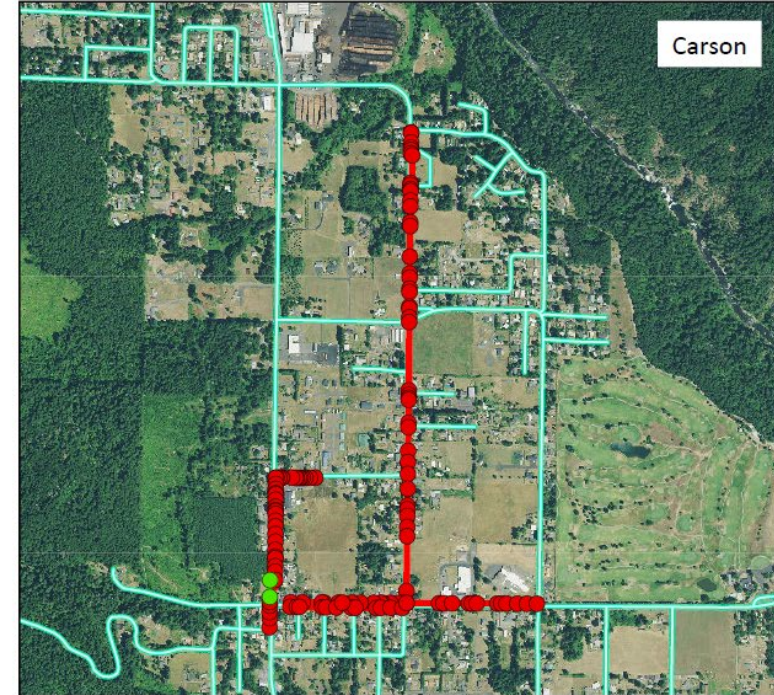
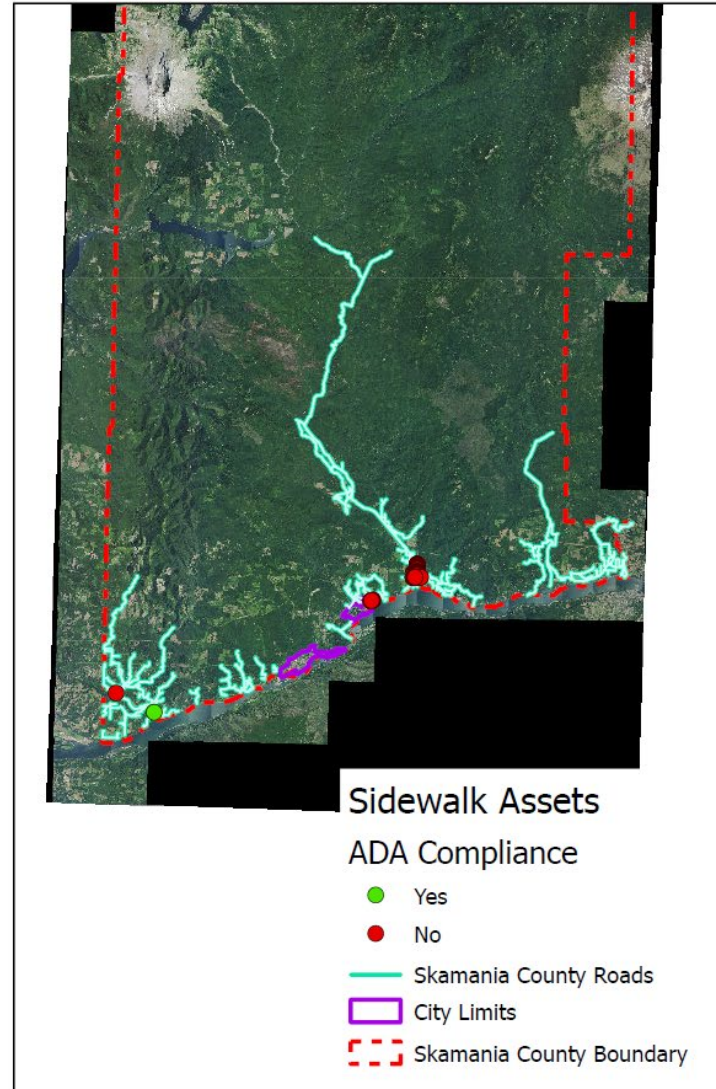
Curb Ramp by Grade, Condition and Compliance
 Percentage



Sidewalk ADA Compliance Map

Total Inventory

- 134 spot locations across 47 sidewalk segments
- 3% ADA-compliant (at transit stops)
- 97% non-compliant

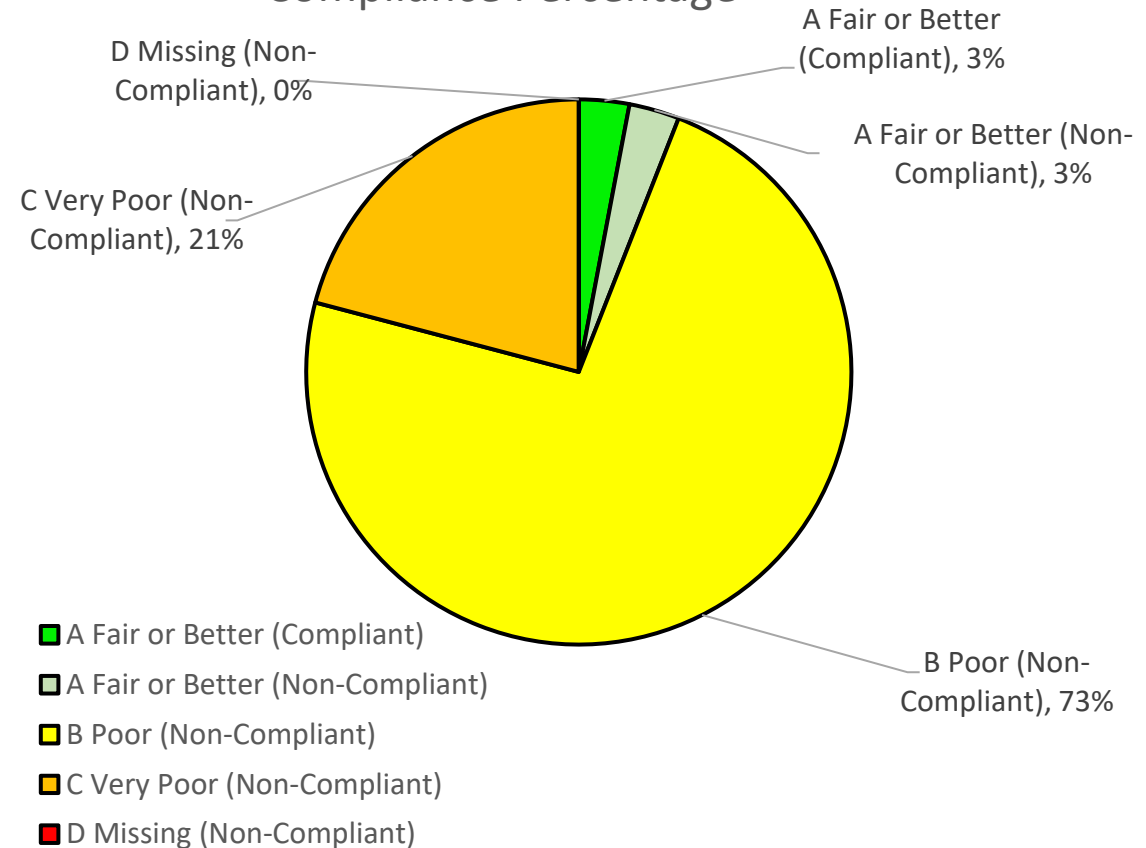


Sidewalk Spot Condition

Grading System for Functionality

- Fair or Better
- Poor
- Very Poor
- Missing

Sidewalks Spot by Grade, Condition and Compliance Percentage

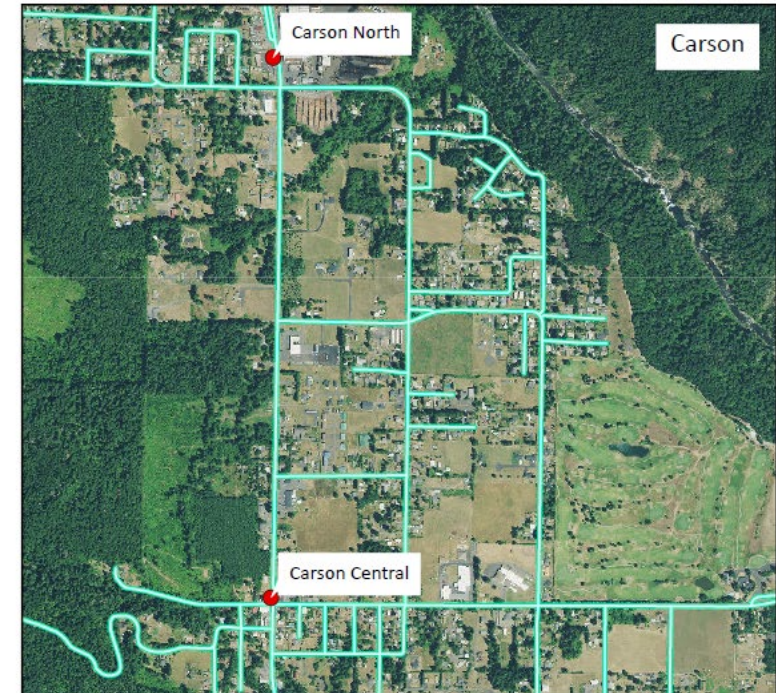
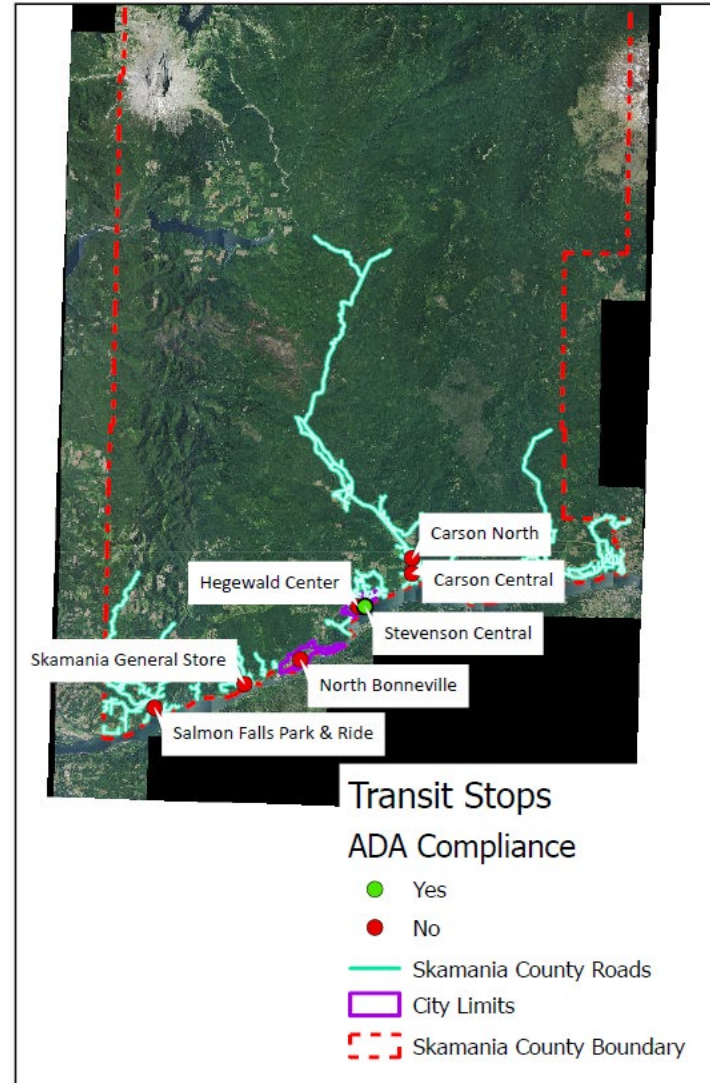


Transit Stop ADA Compliance Map

Total Inventory

8 Transit Stops Evaluated

- Stops within County lines including within Stevenson and North Bonneville city limits
- 1 ADA-compliant (Stevenson Central)
- 7 non-compliant (boarding areas, slopes)

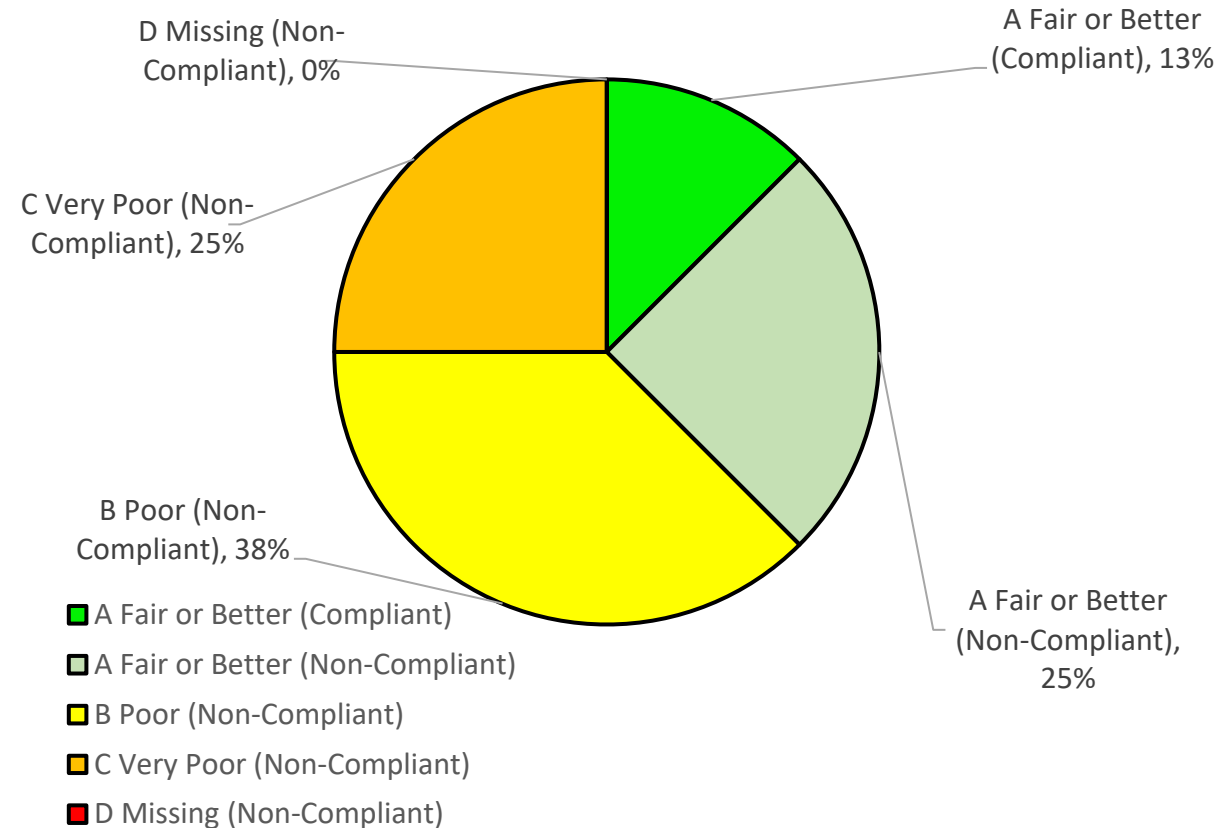


Transit Stop Condition

Grading System for Functionality

- Fair or Better
- Poor
- Very Poor
- Missing

Transit Stops by Grade, Condition and Compliance Percentage



LISTENING SESSION #2

Which public right-of-way barriers are most important for the County to remove first?

Please Raise Hand or Respond in Chat Box

- Missing curb ramps
- Missing pedestrian crossings
- Missing sidewalks
- Sidewalk cracks/bumps
- Fixed objects in path of travel
- Transit stop barriers?
- Overgrown vegetation?
- Other?

LISTENING SESSION #3

Where is it most important for the County to remove public right-of-way barriers?

Please Raise Hand or Respond in Chat Box

- Transit Centers
- Grocery and Retail Stores
- Schools and Libraries
- My Residence
- Senior Center/Care Facilities
- County Buildings and Post Office
- Medical Clinics
- Parks and Trails
- Other?

PART 3

MAKING A PLAN

Personnel/Policies/Procedures

Personnel:

- ADA/504 Coordinator
- Official Responsible to Implement Plan

Policies/Procedures:

- Public ADA Notice
- Accessible Pedestrian Signal (APS) Policy
- ADA Grievance Procedure

How will the County implement the presented information into the PROW ADA Transition Plan?

The Plan will:

- Include public feedback findings in prioritization criteria
- Develop a schedule for barrier removal
- Develop a financial plan to fund barrier removal
- Develop a monitoring tool to track barrier removal:
 - On-going progress reports
 - Schedule for future ADA Transition Plan updates

How will the County prioritize physical barrier removal?

- **County Priority Array with Adoption and Submittal of 6-Year Program (WAC 136-14-050)**
 - Priority Array gives additional priority to projects that address ADA barriers
- **County Local Road Safety Plan**
 - Improving ADA Accessibility is a County safety priority
- **Respond to ADA Grievances**

*Will the public have a chance to
read and comment on the Draft Plan?*

YES!

The Draft ADA Transition Plan will be made available for public comment in spring 2024

<https://www.skamaniacounty.org/departments-offices/public-works/ada-transition-plan>

Thank you for participating!

Our online survey is still open:



Please Raise Hand or Respond in Chat Box

<https://www.skamaniacounty.org/departments-offices/public-works/ada-transition-plan>

Skamania County Public Right-of-Way ADA Transition Plan Virtual Public Workshop

Time: Tuesday, March 26, 2024 06:00 PM Pacific Time (US and Canada)

Attendee 1: 6:03 PM

Good evening, folks!

Attendee 1 speaking on behalf of Attendee 3: 6:09 PM

Christine, Emily's mom, is a licensed Occupational Therapist.

Attendee 2: 6:10 PM

I took care of my mom when she was old. So i got to see issues w accessibility

Attendee 1: 6:26 PM

Not barriers, we appreciate the number of benches and picnic tables available locally, streetside and elsewhere...

Attendee 2: 6:26 PM

Just Curious to see plan for future

Attendee 1: 6:27 PM

Cheers to you all!

Attendee 2: 6:39 PM

Good list. Issues w slope at grocery store. Nice to be able to still access the path by fairgrounds.

Attendee 1 speaking on behalf of Attendee 3: 6:40 PM

Christine says the yellow tactile pads are important at [ramps].

Ramps

Attendee 2: 6:47 PM

Thoughts. In another city we Had issue finding family bathrooms to take disabled adult of other gender to. Another Issue is computers. My elderly neighbor doesn't do computer do so he was unable to access/apply to some programs to help him. There needs to be a person easily available by phone.

Attendee 1: 6:53 PM

Good night!

Skamania County 2024 Public Right-of-Way ADA Barrier Survey

Submitted by: Anonymous user

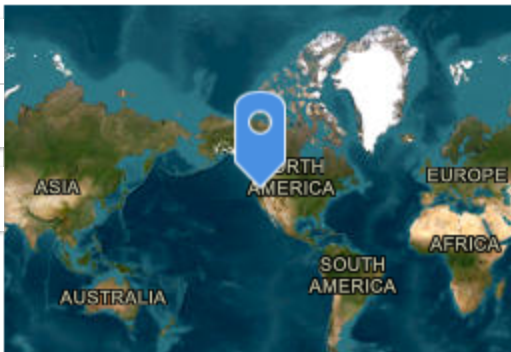
Submitted time: Jan 24, 2024, 4:15:52 PM

1. How familiar are you with what counts as an Americans with Disabilities Act (ADA) barrier in the public right-of-way?

Somewhat familiar

3. Public Right-of-Way Barrier Location Map

Lat: 45.726 Lon: -121.820603



Earthstar Geographics | Esri, FAO, NOAA, USGS

Powered by Esri

5. Which public right-of-way barriers do you want removed before others?

- 1. Missing curb ramps**
- 2. Sidewalk cracks/bumps**
- 3. Missing pedestrian crossings**
- 4. Missing sidewalk segments**
- 5. Fixed objects blocking path of travel**
- 6. Overgrown vegetation in path of travel**
- 7. Missing accessible pedestrian signals**

6. Where is most important to remove barriers?

- 1. Senior Center/Elderly Care Facilities**
- 2. Grocery Stores/Retail Shopping**
- 3. Transit Centers/Stops/Routes**
- 4. Local Government Buildings/Post Offices**
- 5. Schools/Libraries**
- 6. My residence**
- 7. Parks/Trails**

Skamania County 2024 Public Right-of-Way ADA Barrier Survey

Submitted by: Anonymous user

Submitted time: Jan 25, 2024, 2:37:00 AM

1. How familiar are you with what counts as an Americans with Disabilities Act (ADA) barrier in the public right-of-way?

Very familiar

3. Public Right-of-Way Barrier Location Map

Lat: 45.726 Lon: -121.820603



Powered by Esri

5. Which public right-of-way barriers do you want removed before others?

- 1. Overgrown vegetation in path of travel**
- 2. Fixed objects blocking path of travel**
- 3. Missing sidewalk segments**
- 4. Sidewalk cracks/bumps**
- 5. Missing curb ramps**
- 6. Missing pedestrian crossings**
- 7. Missing accessible pedestrian signals**

6. Where is most important to remove barriers?

- 1. Senior Center/Elderly Care Facilities**
- 2. Transit Centers/Stops/Routes**
- 3. Grocery Stores/Retail Shopping**
- 4. Local Government Buildings/Post Offices**
- 5. Schools/Libraries**
- 6. Parks/Trails**
- 7. My residence**

8. Is there anything we are overlooking?

Yes, go back to CA.

Skamania County 2024 Public Right-of-Way ADA Barrier Survey

Submitted by: Anonymous user

Submitted time: Jan 25, 2024, 9:34:59 AM

1. How familiar are you with what counts as an Americans with Disabilities Act (ADA) barrier in the public right-of-way?

Very familiar

2. Public Right-of-Way Barrier Description

Several public access on Island Way in North Bonneville are not ADA accessible, these connect to the paved walking areas around town. The one between 1222 and 1220 there's no ramp and steps that are rock and falling down making it extremely dangerous and inaccessible to elderly and disabled

3. Public Right-of-Way Barrier Location Map

Lat: 45.726 Lon: -121.820603



Powered by Esri

4. Barrier Photo(s)



5. Which public right-of-way barriers do you want removed before others?

1. Missing pedestrian crossings
2. Sidewalk cracks/bumps
3. Overgrown vegetation in path of travel
4. Missing sidewalk segments
5. Missing accessible pedestrian signals
6. Missing curb ramps
7. Fixed objects blocking path of travel

6. Where is most important to remove barriers?

1. Parks/Trails
2. Transit Centers/Stops/Routes
3. Senior Center/Elderly Care Facilities
4. Grocery Stores/Retail Shopping
5. Local Government Buildings/Post Offices
6. Schools/Libraries
7. My residence

Skamania County 2024 Public Right-of-Way ADA Barrier Survey

Submitted by: Anonymous user

Submitted time: Jan 25, 2024, 11:38:20 AM

1. How familiar are you with what counts as an Americans with Disabilities Act (ADA) barrier in the public right-of-way?

Somewhat familiar

2. Public Right-of-Way Barrier Description

Home Valley Park could use pathways to our baseball fields, so people of all ages can participate in the ball games going on down there. I have witnessed struggles of getting wheelchairs to the sites. Elderly and younger alike with canes as well as braces. All family members want to enjoy watching their family members.

3. Public Right-of-Way Barrier Location Map

Lat: 45.726 Lon: -121.820603



Earthstar Geographics

Powered by Esri

5. Which public right-of-way barriers do you want removed before others?

- 1. Missing sidewalk segments**
- 2. Missing pedestrian crossings**
- 3. Missing curb ramps**
- 4. Sidewalk cracks/bumps**
- 5. Missing accessible pedestrian signals**
- 6. Overgrown vegetation in path of travel**
- 7. Fixed objects blocking path of travel**

6. Where is most important to remove barriers?

- 1. Senior Center/Elderly Care Facilities**
- 2. Transit Centers/Stops/Routes**
- 3. Parks/Trails**
- 4. My residence**
- 5. Grocery Stores/Retail Shopping**
- 6. Schools/Libraries**
- 7. Local Government Buildings/Post Offices**

7. Where should the County consider additional pedestrian and bicycle facilities?

At our park, family entertainment for all.

8. Is there anything we are overlooking?

Not sure, you just made me start thinking about this. Glad you are looking into this.

9. First and Last Name (optional)

10. Email Address (optional)

12. Mailing address (optional)

13. Best Method of Contact? (optional)

Skamania County 2024 Public Right-of-Way ADA Barrier Survey

Submitted by: Anonymous user

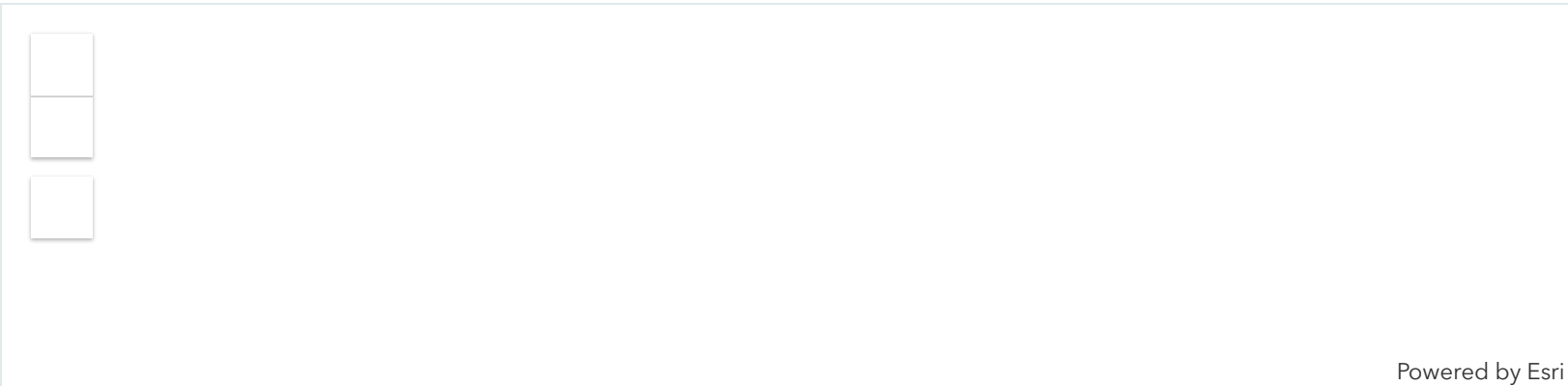
Submitted time: Jan 25, 2024, 12:21:07 PM

1. How familiar are you with what counts as an Americans with Disabilities Act (ADA) barrier in the public right-of-way?

Somewhat familiar

3. Public Right-of-Way Barrier Location Map

Lat: 45.726 Lon: -121.820603



5. Which public right-of-way barriers do you want removed before others?

- 1. Sidewalk cracks/bumps**
- 2. Overgrown vegetation in path of travel**
- 3. Missing sidewalk segments**
- 4. Missing accessible pedestrian signals**
- 5. Missing curb ramps**
- 6. Fixed objects blocking path of travel**
- 7. Missing pedestrian crossings**

6. Where is most important to remove barriers?

- 1. Grocery Stores/Retail Shopping**
- 2. Senior Center/Elderly Care Facilities**
- 3. Local Government Buildings/Post Offices**
- 4. Schools/Libraries**
- 5. Transit Centers/Stops/Routes**
- 6. Parks/Trails**
- 7. My residence**

13. Best Method of Contact? (optional)

Do not contact me

Skamania County 2024 Public Right-of-Way ADA Barrier Survey

Submitted by: Anonymous user

Submitted time: Jan 25, 2024, 3:37:18 PM

1. How familiar are you with what counts as an Americans with Disabilities Act (ADA) barrier in the public right-of-way?

Somewhat familiar

3. Public Right-of-Way Barrier Location Map

Lat: 45.726 Lon: -121.820603



Earthstar Geographics

Powered by Esri

5. Which public right-of-way barriers do you want removed before others?

- 1. Missing curb ramps**
- 2. Overgrown vegetation in path of travel**
- 3. Missing sidewalk segments**
- 4. Missing pedestrian crossings**
- 5. Sidewalk cracks/bumps**
- 6. Fixed objects blocking path of travel**
- 7. Missing accessible pedestrian signals**

6. Where is most important to remove barriers?

- 1. Senior Center/Elderly Care Facilities**
- 2. Transit Centers/Stops/Routes**
- 3. Local Government Buildings/Post Offices**
- 4. Grocery Stores/Retail Shopping**
- 5. Schools/Libraries**
- 6. Parks/Trails**
- 7. My residence**

Skamania County 2024 Public Right-of-Way ADA Barrier Survey

Submitted by: Anonymous user

Submitted time: Feb 5, 2024, 9:22:57 PM

1. How familiar are you with what counts as an Americans with Disabilities Act (ADA) barrier in the public right-of-way?

Somewhat familiar

2. Public Right-of-Way Barrier Description

All of downtown Stevenson was not accessible even days after the snow this year (and other years). Including access to rock cove ALF, the library, Wind River Rx, sidewalks on 2nd and the court house parking lot was icy . Second street has few curb cuts to get on the sidewalk. Rock creek drive has areas with no sidewalks. The area around the library often has debris on the sidewalk. Fairgrounds don't have handicapped parking. Fairground are not easy to get around and not lit well enough at night for safe walking. Library doesn't have an elevator.

3. Public Right-of-Way Barrier Location Map

Lat: 45.689147 Lon: -121.899296



Powered by Esri

5. Which public right-of-way barriers do you want removed before others?

- 1. Missing curb ramps**
- 2. Missing pedestrian crossings**
- 3. Missing accessible pedestrian signals**
- 4. Sidewalk cracks/bumps**
- 5. Overgrown vegetation in path of travel**
- 6. Missing sidewalk segments**
- 7. Fixed objects blocking path of travel**

6. Where is most important to remove barriers?

- 1. Schools/Libraries**
- 2. Senior Center/Elderly Care Facilities**
- 3. Grocery Stores/Retail Shopping**
- 4. Local Government Buildings/Post Offices**
- 5. Parks/Trails**
- 6. Transit Centers/Stops/Routes**
- 7. My residence**

9. First and Last Name (optional)

10. Email Address (optional)

13. Best Method of Contact? (optional)

Skamania County 2024 Public Right-of-Way ADA Barrier Survey

Submitted by: Anonymous user

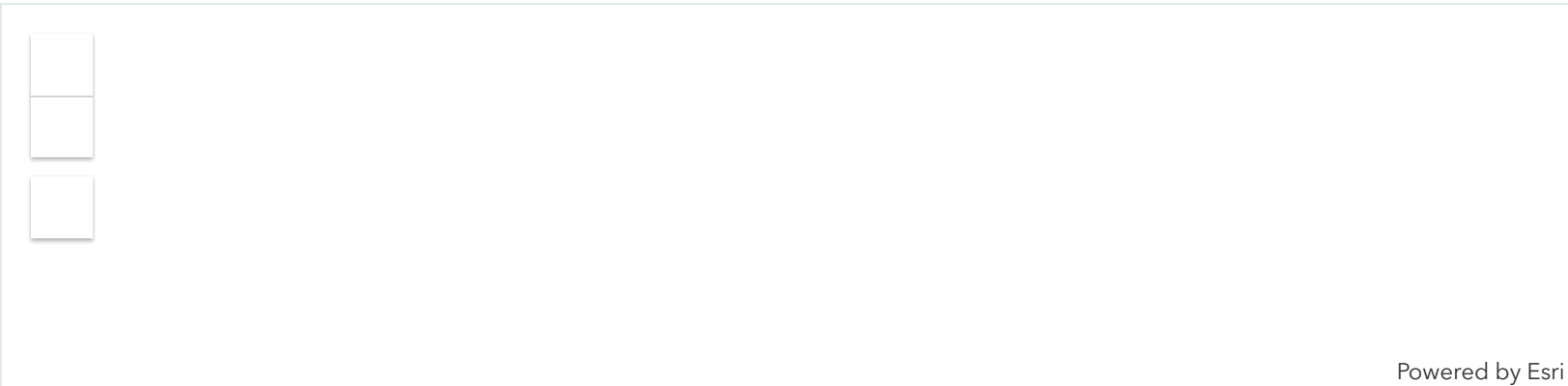
Submitted time: Feb 6, 2024, 11:22:46 AM

1. How familiar are you with what counts as an Americans with Disabilities Act (ADA) barrier in the public right-of-way?

Not at all familiar

3. Public Right-of-Way Barrier Location Map

Lat: 45.726 Lon: -121.820603



5. Which public right-of-way barriers do you want removed before others?

- 1. Missing sidewalk segments**
- 2. Missing accessible pedestrian signals**
- 3. Missing pedestrian crossings**
- 4. Missing curb ramps**
- 5. Fixed objects blocking path of travel**
- 6. Overgrown vegetation in path of travel**
- 7. Sidewalk cracks/bumps**

6. Where is most important to remove barriers?

- 1. Senior Center/Elderly Care Facilities**
- 2. Schools/Libraries**
- 3. My residence**
- 4. Local Government Buildings/Post Offices**
- 5. Parks/Trails**
- 6. Transit Centers/Stops/Routes**
- 7. Grocery Stores/Retail Shopping**

13. Best Method of Contact? (optional)

Do not contact me

Skamania County 2024 Public Right-of-Way ADA Barrier Survey

Submitted by: Anonymous user

Submitted time: Feb 15, 2024, 6:24:00 PM

1. How familiar are you with what counts as an Americans with Disabilities Act (ADA) barrier in the public right-of-way?

Somewhat familiar

3. Public Right-of-Way Barrier Location Map

Lat: 45.714863 Lon: -121.829637



Earthstar Geographics | Esri, FAO, NOAA, USGS

Powered by Esri

5. Which public right-of-way barriers do you want removed before others?

- 1. Sidewalk cracks/bumps**
- 2. Fixed objects blocking path of travel**
- 3. Missing pedestrian crossings**
- 4. Missing curb ramps**
- 5. Missing sidewalk segments**
- 6. Missing accessible pedestrian signals**
- 7. Overgrown vegetation in path of travel**

6. Where is most important to remove barriers?

- 1. Senior Center/Elderly Care Facilities**
- 2. Transit Centers/Stops/Routes**
- 3. Local Government Buildings/Post Offices**
- 4. Schools/Libraries**
- 5. Grocery Stores/Retail Shopping**
- 6. Parks/Trails**
- 7. My residence**

7. Where should the County consider additional pedestrian and bicycle facilities?

North Bonneville to Stevenson to Home Valley. Bicycle routes and side road designations as Bike Routes. Hwy 14 has no room for bicycles or pedestrians.

8. Is there anything we are overlooking?

Stevenson to Garson over the ridge route for bicycles, pedestrians and possibly ORV traffic with connections to Stabler area.

9. First and Last Name (optional)

Skamania County 2024 Public Right-of-Way ADA Barrier Survey

Submitted by: Anonymous user

Submitted time: Feb 18, 2024, 1:30:52 PM

1. How familiar are you with what counts as an Americans with Disabilities Act (ADA) barrier in the public right-of-way?

Somewhat familiar

2. Public Right-of-Way Barrier Description

it would be nice if Carson had more sidewalks up in the main body of town

also it would be great if we had some dog catcher going too many dogs loose to walk safely!

Im disabled with arthritis and I need to try and walk everyday,There are quite a few of us doing this in Carson Sidewalks are very welcome!

3. Public Right-of-Way Barrier Location Map

Lat: 45.726 Lon: -121.820603



Earthstar Geographics

Powered by Esri

5. Which public right-of-way barriers do you want removed before others?

- 1. Missing sidewalk segments**
- 2. Missing accessible pedestrian signals**
- 3. Missing curb ramps**
- 4. Sidewalk cracks/bumps**
- 5. Missing pedestrian crossings**
- 6. Fixed objects blocking path of travel**
- 7. Overgrown vegetation in path of travel**

6. Where is most important to remove barriers?

- 1. Local Government Buildings/Post Offices**
- 2. Senior Center/Elderly Care Facilities**
- 3. Grocery Stores/Retail Shopping**
- 4. My residence**
- 5. Parks/Trails**
- 6. Schools/Libraries**
- 7. Transit Centers/Stops/Routes**

7. Where should the County consider additional pedestrian and bicycle facilities?

please put a sidewalk in on Barnes rd in Carson thx

8. Is there anything we are overlooking?

not sure I have a survey marker on the corner of my property that needs to be put back up,some kids kicked it and my fence over a few years ago and Im not able to use a posthole digger to reset it.

People are driving over the corner of my yard and making a big mess there where a county drain in the street is thx.

9. First and Last Name (optional)

10. Email Address (optional)

11. Phone Number ###-###-#### (optional)

12. Mailing address (optional)

13. Best Method of Contact? (optional)

Skamania County 2024 Public Right-of-Way ADA Barrier Survey

Submitted by: Anonymous user

Submitted time: Feb 27, 2024, 7:30:55 AM

1. How familiar are you with what counts as an Americans with Disabilities Act (ADA) barrier in the public right-of-way?

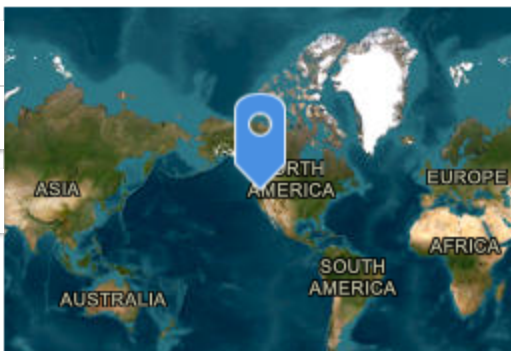
Not at all familiar

2. Public Right-of-Way Barrier Description

Crossing hwy 14 on Second street is terrible 😞 because there's no way to communicate to drivers you're partially immobile and can't move quickly across it. We need a light up, flashing crosswalk at 14 & Russell Ave. to warn drivers pedestrians are crossing.

3. Public Right-of-Way Barrier Location Map

Lat: 45.726 Lon: -121.820603



Powered by Esri

5. Which public right-of-way barriers do you want removed before others?

- 1. Missing pedestrian crossings**
- 2. Missing curb ramps**
- 3. Sidewalk cracks/bumps**
- 4. Missing sidewalk segments**
- 5. Missing accessible pedestrian signals**
- 6. Overgrown vegetation in path of travel**
- 7. Fixed objects blocking path of travel**

6. Where is most important to remove barriers?

- 1. Parks/Trails**
- 2. Transit Centers/Stops/Routes**
- 3. Grocery Stores/Retail Shopping**
- 4. Senior Center/Elderly Care Facilities**
- 5. My residence**
- 6. Local Government Buildings/Post Offices**
- 7. Schools/Libraries**

7. Where should the County consider additional pedestrian and bicycle facilities?

Hwy 14 (Second street) & Russell Ave

Hwy 14 (First St) & Russell Ave

Bicycle facilities in front of the court house and Rock Creek Park.

Skamania County 2024 Public Right-of-Way ADA Barrier Survey

Submitted by: Anonymous user

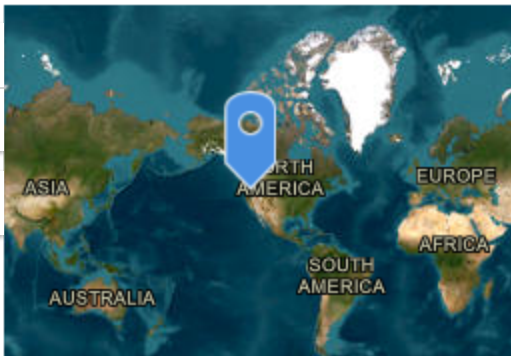
Submitted time: Feb 29, 2024, 3:48:46 PM

1. How familiar are you with what counts as an Americans with Disabilities Act (ADA) barrier in the public right-of-way?

Extremely familiar

3. Public Right-of-Way Barrier Location Map

Lat: 45.726 Lon: -121.820603



Earthstar Geographics | Esri, FAO, NOAA, USGS

Powered by Esri

5. Which public right-of-way barriers do you want removed before others?

- 1. Missing curb ramps**
- 2. Missing sidewalk segments**
- 3. Sidewalk cracks/bumps**
- 4. Overgrown vegetation in path of travel**
- 5. Fixed objects blocking path of travel**
- 6. Missing pedestrian crossings**
- 7. Missing accessible pedestrian signals**

6. Where is most important to remove barriers?

- 1. Local Government Buildings/Post Offices**
- 2. Transit Centers/Stops/Routes**
- 3. Senior Center/Elderly Care Facilities**
- 4. Schools/Libraries**
- 5. Grocery Stores/Retail Shopping**
- 6. Parks/Trails**
- 7. My residence**

10. Email Address (optional)

Skamania County 2024 Public Right-of-Way ADA Barrier Survey

Submitted by: Anonymous user

Submitted time: Mar 7, 2024, 9:30:19 AM

1. How familiar are you with what counts as an Americans with Disabilities Act (ADA) barrier in the public right-of-way?

Somewhat familiar

3. Public Right-of-Way Barrier Location Map

Lat: 45.726 Lon: -121.820603



Earthstar Geographics | Esri, FAO, NOAA, USGS

Powered by Esri

5. Which public right-of-way barriers do you want removed before others?

- 1. Overgrown vegetation in path of travel**
- 2. Fixed objects blocking path of travel**
- 3. Missing pedestrian crossings**
- 4. Sidewalk cracks/bumps**
- 5. Missing curb ramps**
- 6. Missing sidewalk segments**
- 7. Missing accessible pedestrian signals**

6. Where is most important to remove barriers?

- 1. Senior Center/Elderly Care Facilities**
- 2. Grocery Stores/Retail Shopping**
- 3. Local Government Buildings/Post Offices**
- 4. Transit Centers/Stops/Routes**
- 5. Parks/Trails**
- 6. Schools/Libraries**
- 7. My residence**

13. Best Method of Contact? (optional)

Do not contact me

Skamania County 2024 Public Right-of-Way ADA Barrier Survey

Submitted by: Anonymous user

Submitted time: Mar 19, 2024, 11:33:10 AM

1. How familiar are you with what counts as an Americans with Disabilities Act (ADA) barrier in the public right-of-way?

Very familiar

3. Public Right-of-Way Barrier Location Map

Lat: 45.726 Lon: -121.820603



Earthstar Geographics | Esri, FAO, NOAA, USGS

Powered by Esri

5. Which public right-of-way barriers do you want removed before others?

- 1. Fixed objects blocking path of travel**
- 2. Overgrown vegetation in path of travel**
- 3. Sidewalk cracks/bumps**
- 4. Missing pedestrian crossings**
- 5. Missing curb ramps**
- 6. Missing sidewalk segments**
- 7. Missing accessible pedestrian signals**

6. Where is most important to remove barriers?

- 1. Transit Centers/Stops/Routes**
- 2. Local Government Buildings/Post Offices**
- 3. Schools/Libraries**
- 4. Senior Center/Elderly Care Facilities**
- 5. Grocery Stores/Retail Shopping**
- 6. Parks/Trails**
- 7. My residence**

Skamania County 2024 Public Right-of-Way ADA Barrier Survey

Submitted by: Anonymous user

Submitted time: Mar 26, 2024, 5:20:21 PM

1. How familiar are you with what counts as an Americans with Disabilities Act (ADA) barrier in the public right-of-way?

Somewhat familiar

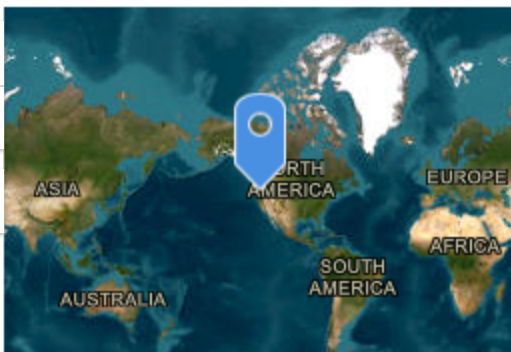
2. Public Right-of-Way Barrier Description

Our family recently walked with our special needs daughter along the path from the park west of the fairgrounds, where the community gardens are, to the Columbia Gorge Museum. In general we found the sidewalks passable, with just a few sections where either debris or cracks made us have hold our daughter close as we traversed them, since she has limited depth perception.

Our one plea is that the county consider getting flashing pedestrian lights for traversing the downtown crosswalks. Given varying lighting and weather conditions which make seeing pedestrians not always easily visible, the current flag system could be augmented with visual and audio cueing for needy populations.

3. Public Right-of-Way Barrier Location Map

Lat: 45.726 Lon: -121.820603



Earthstar Geographics | Esri, FAO, NOAA, USGS

Powered by Esri

5. Which public right-of-way barriers do you want removed before others?

- 1. Fixed objects blocking path of travel**
- 2. Missing sidewalk segments**
- 3. Missing curb ramps**
- 4. Missing accessible pedestrian signals**
- 5. Missing pedestrian crossings**
- 6. Overgrown vegetation in path of travel**
- 7. Sidewalk cracks/bumps**

6. Where is most important to remove barriers?

1. **Grocery Stores/Retail Shopping**
2. **Local Government Buildings/Post Offices**
3. **Senior Center/Elderly Care Facilities**
4. **Transit Centers/Stops/Routes**
5. **Schools/Libraries**
6. **Parks/Trails**
7. **My residence**

8. Is there anything we are overlooking?

We would appreciate more public social media announcements of initiatives, perhaps maps with areas of identified difficulty, points of interest or history to share with others about the features of our gorgeous county as they pertain to Public Works. We would love to be part of organizing or attending a community celebration event where the snow removal technicians, street maintenance crews, electrical workers, paramedics, firefighters, sheriffs officers, etc. are recognized for the vital work they do especially under less than ideal circumstances to keep us warm, dry, and safe in this rural, wilderness-ringed, region.

9. First and Last Name (optional)

10. Email Address (optional)

12. Mailing address (optional)

13. Best Method of Contact? (optional)

Skamania County 2024 Public Right-of-Way ADA Barrier Survey

Submitted by: Anonymous user

Submitted time: Mar 31, 2024, 8:47:53 PM

1. How familiar are you with what counts as an Americans with Disabilities Act (ADA) barrier in the public right-of-way?

Extremely familiar

3. Public Right-of-Way Barrier Location Map

Lat: 45.726 Lon: -121.820603



Earthstar Geographics | Esri, FAO, NOAA, USGS

Powered by Esri

5. Which public right-of-way barriers do you want removed before others?

- 1. Missing curb ramps**
- 2. Overgrown vegetation in path of travel**
- 3. Fixed objects blocking path of travel**
- 4. Missing accessible pedestrian signals**
- 5. Sidewalk cracks/bumps**
- 6. Missing pedestrian crossings**
- 7. Missing sidewalk segments**

6. Where is most important to remove barriers?

- 1. Parks/Trails**
- 2. My residence**
- 3. Schools/Libraries**
- 4. Transit Centers/Stops/Routes**
- 5. Grocery Stores/Retail Shopping**
- 6. Senior Center/Elderly Care Facilities**
- 7. Local Government Buildings/Post Offices**

7. Where should the County consider additional pedestrian and bicycle facilities?

Washington state route 14

8. Is there anything we are overlooking?

Not being upfront as to how your overcharging folks to pay for your ADA

13. Best Method of Contact? (optional)