

Skamania County Knotweed Control Project Agreement K2275



Skamania County Noxious Weed Control Program
704 SW Rock Creek Drive
Post Office Box 369
Stevenson, WA 98648
509-427-3942
soliz@co.skamania.wa.us

Background

Lead Organization

The Skamania County Noxious Weed Control Program (NWCP) is responsible for educating and assisting landowners and managers with control of noxious weeds within Skamania County.

Partner Organizations

Supporting partners include the USDA Columbia River Gorge National Scenic Area, US Fish and Wildlife Service Columbia River Complex, US Forest Service, US Army Corps of Engineers, Washington State Department of Transportation, City of Stevenson, City of North Bonneville, Yakama Nation Tribal Fisheries, Longview Timberlands, Burlington Northern Santa Fe Railroad, Clark County Vegetation Management, Klickitat County Vegetation Management and the Columbia Gorge Cooperative Weed Management Area.

Ongoing Knotweed Control Project

The knotweed control project in Skamania County launched in 2004 and the ongoing efforts have resulted in a significant reduction in the overall knotweed infestations. Since 2004, the Skamania County NWCP has engaged 338 private and agency landowners in Skamania and Klickitat counties to secure comprehensive participation in the knotweed control project. Skamania County NWCP continues to raise awareness by attending many public outreach events and working group meetings, providing Best Management Practices to those affected by knotweed, and publishing articles.

Work Completed to Date

Skamania County NWCP began the knotweed project with a comprehensive survey in 2002 and 2003. Public outreach and control began in 2004 and most waivers for known sites were obtained by 2006. In 2007, Skamania County partnered with Klickitat County to conduct knotweed control on all known sites. Treatment continues as funding becomes available. As of 2018, there are 391 participants in the knotweed program that either engage the services of Skamania County Noxious Weed staff for treatment of knotweed or actively participate through maintenance/monitoring of their sites. In 2018, 62 landowners renewed their waivers. Staff will contact landowners for updates on site conditions and waiver renewal as needed through 2019.

Implementation

Project Objectives and Goals

The objective of the knotweed project in 2018 and moving forward is to maintain control, assist landowners enrolled in the knotweed control project, and empower site managers to effectively maintain their knotweed sites. The goal of this project is to sustain the work already accomplished, prevent re-infestation and reinforce landowner commitment to maintenance in the future.

Project Area Description

The project area is comprised of forest lands, Columbia River Gorge National Scenic Area lands, agricultural resource land and mixed-use rural/residential lands owned by private citizens. The project area includes all knotweed infestations in riparian and upland sites in Skamania County within **WRIA 28** - Washougal River, Canyon Creek, Woodard Creek, Hardy Creek; **WRIA 29** - Rock Creek, Kanaka Creek, Carson Creek, Wind River, Collins Creek, Little White Salmon, and the White Salmon River. The area also includes the bank of the Columbia River within Skamania County.

Infestation Description

The infestation consists primarily of the hybrid Bohemian knotweed (*Polygonum x bohemicum*), with one giant knotweed (*Polygonum sachalinense*) site and four Himalayan knotweed (*Polygonum polystachyum*) sites. The entire extent of the infestation encompasses 263 acres, affecting 3 WRIsAs, and includes sites that have surveyed clean for several years in both Skamania and Klickitat counties. Most sites have been reduced from large dense patches to a handful of small but persistent plants. One of the sites includes both Japanese and Himalayan knotweed.

Integrated Pest Management Strategies

Knotweed treatments for 2018 started on May 15th and finished on October 1st. The Skamania County Knotweed Control Project utilizes a combination of foliar applications, stem injection, and light deprivation to perform knotweed control. Foliar applications are made with a solution of 1% imazapyr and an approved adjuvant at 1% are made on sites treated for consecutive years where fewer smaller plants persist. For newer sites or sites where bigger plants occur, a solution of 1% imazapyr combined with 2% glyphosate and 1% adjuvant is used. Injection sites use 100% glyphosate concentrate with a maximum rate of 3 ml per cane, however, this method is rarely employed, and was not utilized in 2018. A foliar application was made to the plants sprouting at the edges of the ground cover at the only light deprivation site at the USACE Bonneville Dam. The light deprivation control is moderate with knotweed travelling beyond the covered area.

Landowners in Mill A recovered the lost view of their pond



Data Collection and Calculations

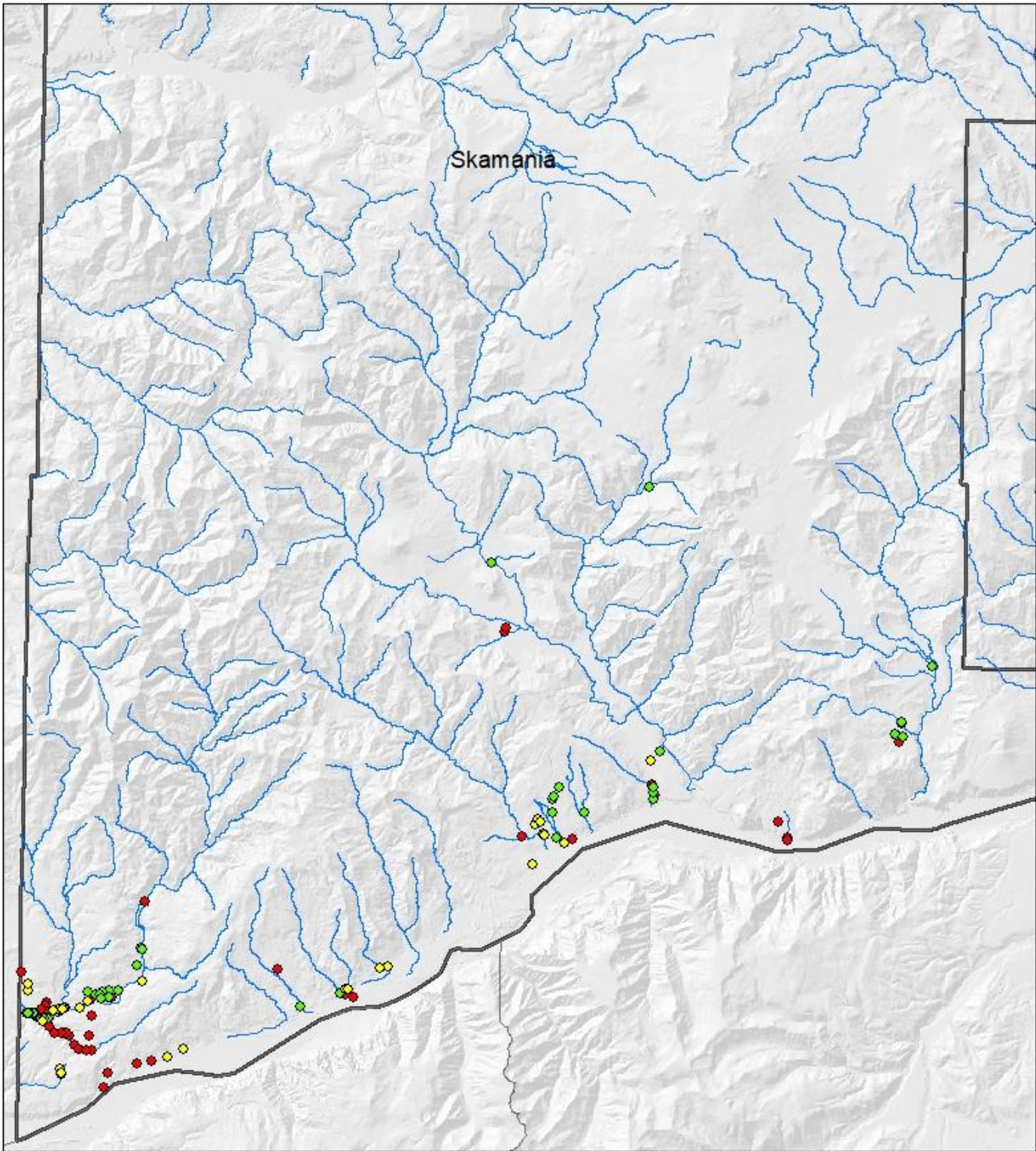
All sites are mapped using Arcmap and some were collected with iForm. Program staff continues to monitor sites where there have been past infestations and those where landowners have assumed responsibility.

Results

2018 Skamania County Knotweed Control Project	
<ul style="list-style-type: none">• Assisted 114 land owners on 134 sites• 26.46 River Miles Surveyed• 67 Acres Treated• 134 sites visited, 60 treated, 64 clean, 10 treated by owner• 28 sites maintained by landowner	

River Miles Surveyed/Treated

Location	Stream	Area Surveyed	Miles Surveyed
Washougal (WRIA28)	Washougal River	From Salmon Falls to County Line	3.04
Washougal (WRIA28)	Canyon Creek	From Washougal River to Mt. Pleasant Rd.	2.75
MidColumbia (WRIA 28)	Little Creek/Woodard Creek at BRSP	from T2N, R6E, Sec 23, 2182 Kueffler Rd. to Columbia	2
MidColumbia (WRIA 28)	Collins Creek	From Columbia River 1 mile north plus one tributary .2 mi	1.2
MidColumbia (WRIA29,30)	Columbia River	Carson Creek to St. Cloud	17.47
Total			26.46



**Skamania County
Noxious Weed Control Program
2018 Knotweed Program**



- Owner Maintained
- Clean
- Treated 2018



Conclusions and the Future

Education and Outreach

In 2018, Skamania County NWCP distributed [Best Management Practices](#) for knotweed to the public. These BMPs were created for both landowners and practitioners to use and can be found on the Columbia Gorge Cooperative Weed Management website. Skamania staff emphasized the knotweed program during outreach at the Skamania County Fair for four days in August and at several weed prevention and outreach events held throughout the Columbia River Gorge.

Annually, project participants are contacted to update waivers and to share information and updates about project status. The program staff encourages landowners to assume responsibility for their sites by providing best management practice information, site maintenance and assistance in restoration plan development. It is hoped that this effort will realize long-term sustainable knotweed control. Education about the program is provided to new landowners who acquire sites historically infested with knotweed to ensure ongoing stewardship. Strategies and accomplishments are shared at working groups, in the local paper, and Cooperative Weed Management Area meetings.

Conclusion

The knotweed program has successfully eliminated >95% of the original knotweed infestation in Skamania County. Most sites are in maintenance phase and several have surveyed knotweed-free for many years. Many sites were surveyed clean in 2018. There were sites along Canyon Creek that were not treated in 2017 that showed a slight increase in size and number. This waterway will be top priority in 2019.

Fifty-eight landowners have assumed responsibility for their knotweed sites. Community awareness of noxious weeds and the potential impacts on riparian ecosystems have been established and continue to drive programs based on the improvement of former knotweed sites. The Skamania County Noxious Weed Control Program is committed to continued stewardship and will reinforce the importance of knotweed control as it relates to habitat and conservation ideals.