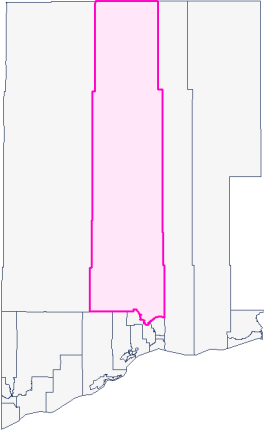


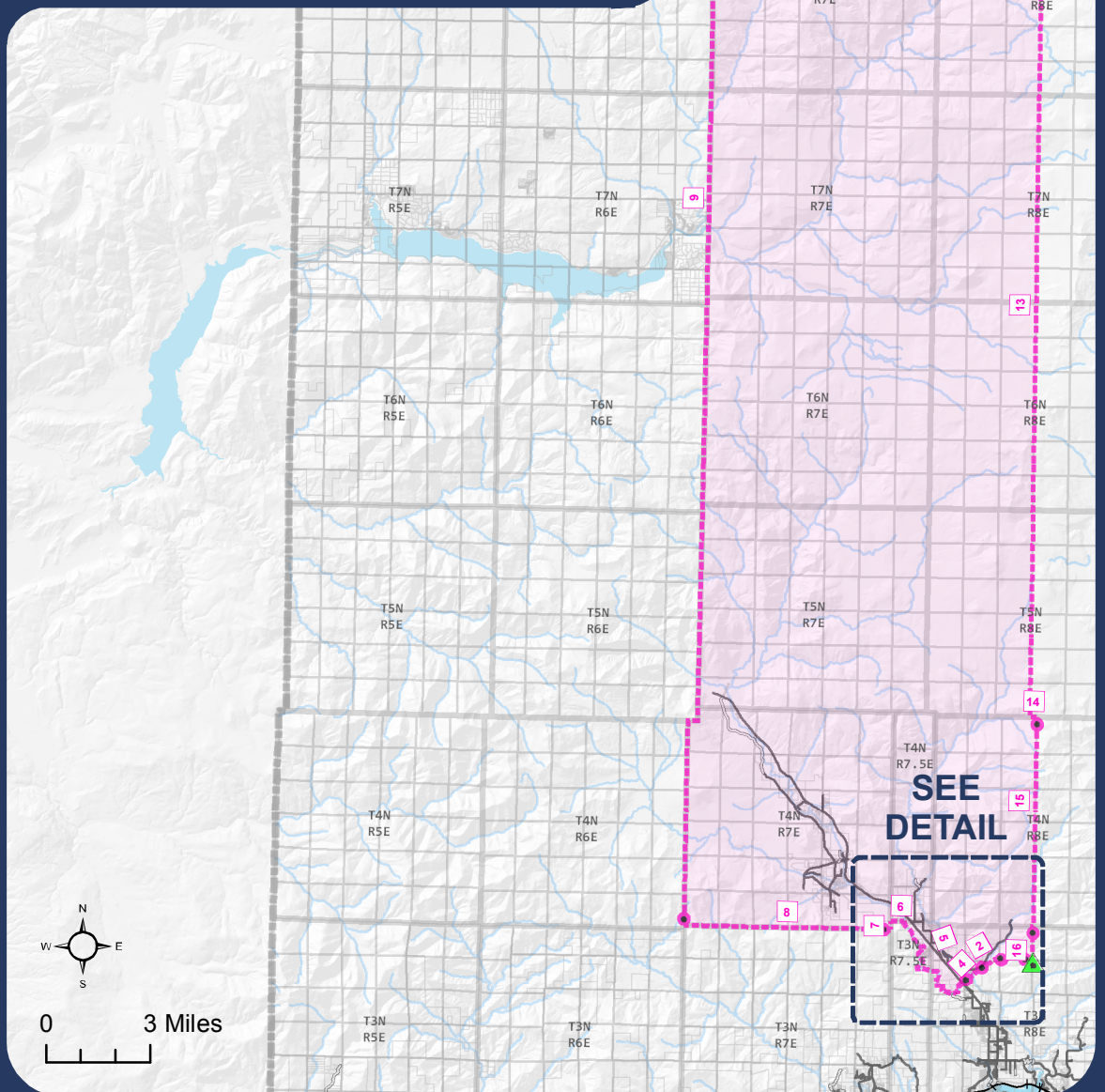
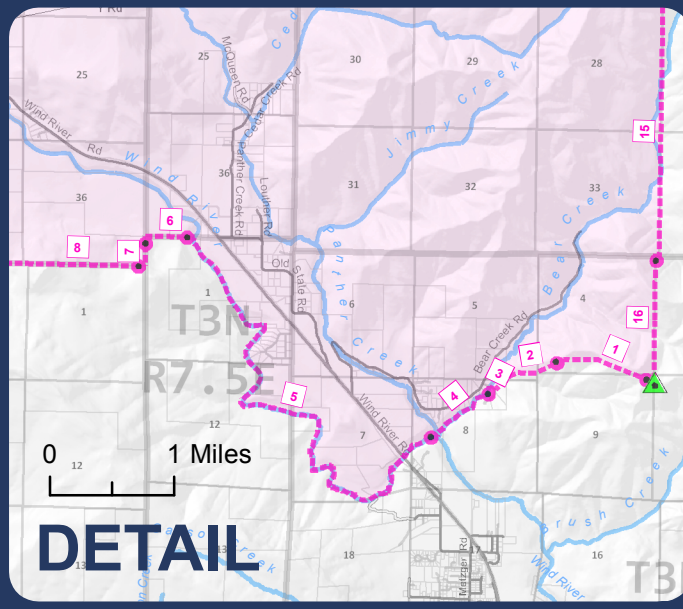
VOTING PRECINCT MAP

OVERVIEW



LEGEND

- Voting District Line
- Legal Desc Point of Beginning
- Line Number in Legal Desc
- Parcel
- Section
- Township
- Stream
- ROAD TYPE**
- Highway
- Paved
- Gravel
- Private
- Railroad
- Skamania County



Precinct Name:
STABLER
 Precinct Number:
300



Skamania County Auditor
 Elections Division

DISCLAIMER: This map product was prepared by Skamania County and is for information purposes only. It may not have been prepared for or be suitable for legal, engineering, or surveying purposes. Users of this information should review or consult the primary data and information sources to ascertain the usability of the information.

Data Source and Map By: Skamania County Assessment & GIS, R. Hollatz, 3/5/2013