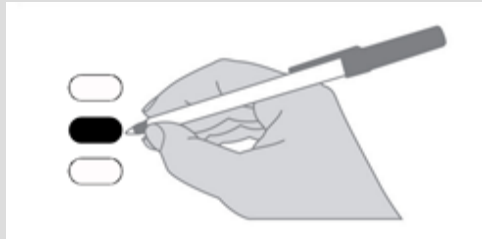


## Instructions

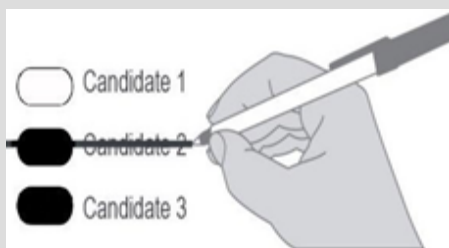
### How to vote



Use a black ink pen to completely fill in the oval next to your choice.

Vote for one in each race. If you vote for more than one, no votes will be counted for that race.

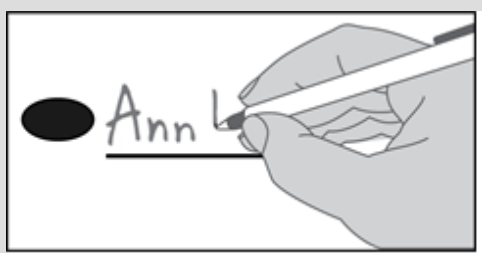
### How to correct a mistake



To make a correction, draw a line through the entire choice.

You then have the option of making a different choice by completely filling in another oval.

### Optional write-in



To add a new candidate, fill in the oval next to the write-in line and print the name on the write-in line.

If a primary election was held for an office, the two candidates who received the most votes in the Primary advanced to the General Election.

Each candidate for partisan office may state a political party that he or she prefers. A candidate's preference does not imply that the candidate is nominated or endorsed by the party, or that the party approves of or associates with that candidate.

The election for President and Vice President is different. Candidates for President and Vice President are the official nominees of their political party.



### Who donates to campaigns?

View information on financial contributors for federal candidates:

#### Federal Election Commission

[www.fec.gov](http://www.fec.gov)

Toll Free 1 (800) 424-9530

View financial contributors for candidates and measures:

#### Public Disclosure Commission

[www.pdc.wa.gov](http://www.pdc.wa.gov)

Toll Free 1 (877) 601-2828

**Initiatives to the People**

**ONLY REGISTERED  
VOTERS IN  
STATE  
ARE ELIGIBLE TO VOTE  
ON THE FOLLOWING**

**Initiative Measure No. 2066**

Initiative Measure No. 2066 concerns regulating energy services, including natural gas and electrification. This measure would repeal or prohibit certain laws and regulations that discourage natural gas use and/or promote electrification, and require certain utilities and local governments to provide natural gas to eligible customers.

Should this measure be enacted into law?

Yes

No

**Initiatives to the  
Legislature**

**ONLY REGISTERED  
VOTERS IN  
STATE  
ARE ELIGIBLE TO VOTE  
ON THE FOLLOWING**

**Initiative Measure No. 2109**

Initiative Measure No. 2109 concerns taxes. This measure would repeal an excise tax imposed on the sale or exchange of certain long-term capital assets by individuals who have annual capital gains of over \$250,000. This measure would decrease funding for K-12 education, higher education, school construction, early learning, and childcare.

Should this measure be enacted into law?

Yes

No

INTENTIONALLY LEFT BLANK

**Initiatives to the  
Legislature**

(continued)

**ONLY REGISTERED  
VOTERS IN  
STATE  
ARE ELIGIBLE TO VOTE  
ON THE FOLLOWING**

**Initiative Measure No. 2117**

Initiative Measure No. 2117 concerns carbon tax credit trading. This measure would prohibit state agencies from imposing any type of carbon tax credit trading, and repeal legislation establishing a cap and invest program to reduce greenhouse gas emissions. This measure would decrease funding for investments in transportation, clean air, renewable energy, conservation, and emissions-reduction.

Should this measure be enacted into law?

Yes

No

**ONLY REGISTERED  
VOTERS IN  
STATE  
ARE ELIGIBLE TO VOTE  
ON THE FOLLOWING**

**Initiative Measure No. 2124**

Initiative Measure No. 2124 concerns state long term care insurance. This measure would provide that employees and self-employed people must elect to keep coverage under RCW 50B.04 and could opt-out any time. It would also repeal a law governing an exemption for employees. This measure would decrease funding for Washington's public insurance program providing long-term care benefits and services.

Should this measure be enacted into law?

Yes

No

INTENTIONALLY LEFT BLANK

**Countywide Measures**

**ONLY REGISTERED  
VOTERS IN  
COUNTY  
ARE ELIGIBLE TO VOTE  
ON THE FOLLOWING**

**Skamania County  
Proposition No. 1**

**Sales and Use Tax for Funding  
Sheriff's Office Personnel**

The Skamania County Board of County Commissioners has adopted Resolution No 2024-12 concerning a sales and use tax pursuant to RCW 82.14.450. If approved, this proposition would authorize an additional sales and use tax at a rate of 0.3 percent to be used for funding additional needed law enforcement personnel including an animal control officer.

Should this proposition be:

Approved

Rejected

INTENTIONALLY LEFT BLANK

**Countywide Measures**  
(continued)

**ONLY REGISTERED  
VOTERS IN  
CEMETERY DISTRICT  
ARE ELIGIBLE TO VOTE  
ON THE FOLLOWING**

**Cemetery District  
Proposition No. 1  
Property Tax Levy Lid-Lift for  
Maintenance and Upkeep Costs**

The Board of Commissioners for the Skamania County Cemetery District adopted Resolution No. 2024-02 Proposing an increase in the District's regular property tax levy. If approved, this proposition would establish a new regular levy rate of \$0.1037 per \$1,000 of assessed valuation to be collected beginning January 2025. This permanent increase will establish a new dollar amount for the purpose of computing the limitations imposed by RCW 84.55.010 for subsequent levies. Proceeds will be used to maintain and adequately fund district operations and proactively plan for the increasing needs and service demands of communities served by the District.

Should this proposition be approved?

YES

NO

INTENTIONALLY LEFT BLANK

**Federal Partisan Offices**

**ONLY REGISTERED  
VOTERS IN  
STATE  
ARE ELIGIBLE TO VOTE  
ON THE FOLLOWING**

**United States President / Vice President**

Kamala D. Harris / Tim Walz  
Democratic Party Nominees

Donald J. Trump / JD Vance  
Republican Party Nominees

Robert F. Kennedy Jr. / Nicole Shanahan  
We The People Party Nominees

Jill Stein / Rudolph Ware  
Green Party Nominees

Claudia De la Cruz / Karina Garcia  
Socialism and Liberation Party Nominees

Rachele Fruit / Dennis Richter  
Socialist Workers Party Nominees

Joseph Kishore / Jerry White  
Socialist Equality Party Nominees

Chase Oliver / Mike ter Maat  
Libertarian Party Nominees

Cornel West / Melina Abdullah  
Justice For All Party Nominees

Shiva Ayyadurai / Crystal Ellis  
Independent Candidates

Write-In

---

INTENTIONALLY LEFT BLANK

READ: Each candidate for President and Vice President is the official nominee of a political party. For other partisan offices, each candidate may state a political party that he or she prefers. A candidate's preference does not imply that the candidate is nominated or endorsed by the party, or that the party approves of or associates with that candidate.

**ONLY REGISTERED  
VOTERS IN  
STATE  
ARE ELIGIBLE TO VOTE  
ON THE FOLLOWING**

**United States Senator**

Maria Cantwell  
(Prefers Democratic Party)

Dr Raul Garcia  
(Prefers GOP Party)

Write-In

---

**ONLY REGISTERED  
VOTERS IN  
CONGRESSIONAL  
DISTRICT 3  
ARE ELIGIBLE TO VOTE  
ON THE FOLLOWING**

**Congressional District 3  
U.S. Representative**

Marie Gluesenkamp Perez  
(Prefers Democratic Party)

Joe Kent  
(Prefers Republican Party)

Write-In

---

INTENTIONALLY LEFT BLANK

<b>State Partisan Offices</b>
<b>ONLY REGISTERED VOTERS IN STATE ARE ELIGIBLE TO VOTE ON THE FOLLOWING</b>
<p><b>Governor</b></p> <p><input type="radio"/> Bob Ferguson (Prefers Democratic Party)</p> <p><input type="radio"/> Dave Reichert (Prefers Republican Party)</p> <p><input type="radio"/> Write-In</p> <hr/>
<b>ONLY REGISTERED VOTERS IN STATE ARE ELIGIBLE TO VOTE ON THE FOLLOWING</b>
<p><b>Lt. Governor</b></p> <p><input type="radio"/> Denny Heck (Prefers Democratic Party)</p> <p><input type="radio"/> Dan Matthews (Prefers Republican Party)</p> <p><input type="radio"/> Write-In</p> <hr/>
<b>ONLY REGISTERED VOTERS IN STATE ARE ELIGIBLE TO VOTE ON THE FOLLOWING</b>
<p><b>Secretary of State</b></p> <p><input type="radio"/> Steve Hobbs (Prefers Democratic Party)</p> <p><input type="radio"/> Dale Whitaker (Prefers Republican Party)</p> <p><input type="radio"/> Write-In</p> <hr/>
INTENTIONALLY LEFT BLANK

<b>State Partisan Offices</b> (continued)
<b>ONLY REGISTERED VOTERS IN STATE ARE ELIGIBLE TO VOTE ON THE FOLLOWING</b>
<p><b>State Treasurer</b></p> <p><input type="radio"/> Mike Pellicciotti (Prefers Democratic Party)</p> <p><input type="radio"/> Sharon Hanek (Prefers Republican Party)</p> <p><input type="radio"/> Write-In</p> <hr/>
<b>ONLY REGISTERED VOTERS IN STATE ARE ELIGIBLE TO VOTE ON THE FOLLOWING</b>
<p><b>State Auditor</b></p> <p><input type="radio"/> Pat (Patrice) McCarthy (Prefers Democratic Party)</p> <p><input type="radio"/> Matt Hawkins (Prefers Republican Party)</p> <p><input type="radio"/> Write-In</p> <hr/>
<b>ONLY REGISTERED VOTERS IN STATE ARE ELIGIBLE TO VOTE ON THE FOLLOWING</b>
<p><b>Attorney General</b></p> <p><input type="radio"/> Pete Serrano (Prefers Republican Party)</p> <p><input type="radio"/> Nick Brown (Prefers Democratic Party)</p> <p><input type="radio"/> Write-In</p> <hr/>
INTENTIONALLY LEFT BLANK

<b>State Partisan Offices</b> (continued)
<b>ONLY REGISTERED VOTERS IN STATE ARE ELIGIBLE TO VOTE ON THE FOLLOWING</b>
<p><b>Commissioner of Public Lands</b></p> <p><input type="radio"/> Jaime Herrera Beutler (Prefers Republican Party)</p> <p><input type="radio"/> Dave Upthegrove (Prefers Democratic Party)</p> <p><input type="radio"/> Write-In</p> <hr/>
<b>State Nonpartisan Offices</b>
<b>ONLY REGISTERED VOTERS IN STATE ARE ELIGIBLE TO VOTE ON THE FOLLOWING</b>
<p><b>Superintendent of Public Instruction</b></p> <p><input type="radio"/> Chris Reykdal</p> <p><input type="radio"/> David Olson</p> <p><input type="radio"/> Write-In</p> <hr/>
<b>State Partisan Offices</b>
<b>ONLY REGISTERED VOTERS IN STATE ARE ELIGIBLE TO VOTE ON THE FOLLOWING</b>
<p><b>Insurance Commissioner</b></p> <p><input type="radio"/> Patty Kuderer (Prefers Democratic Party)</p> <p><input type="radio"/> Phil Fortunato (Prefers Republican Party)</p> <p><input type="radio"/> Write-In</p> <hr/>
INTENTIONALLY LEFT BLANK

**Legislative Partisan Offices**

**ONLY REGISTERED VOTERS IN LEGISLATIVE DISTRICT 17 ARE ELIGIBLE TO VOTE ON THE FOLLOWING**

**Legislative District 17 State Senator**

Paul Harris  
(Prefers Republican Party)

Marla Keethler  
(Prefers Democratic Party)

Write-In  
\_\_\_\_\_

**ONLY REGISTERED VOTERS IN LEGISLATIVE DISTRICT 17 ARE ELIGIBLE TO VOTE ON THE FOLLOWING**

**Legislative District 17 State Representative Position 1**

Kevin Waters  
(Prefers Republican Party)

Write-In  
\_\_\_\_\_

**ONLY REGISTERED VOTERS IN LEGISLATIVE DISTRICT 17 ARE ELIGIBLE TO VOTE ON THE FOLLOWING**

**Legislative District 17 State Representative Position 2**

Terri Niles  
(Prefers Democratic Party)

David Stuebe  
(Prefers Republican Party)

Write-In  
\_\_\_\_\_

INTENTIONALLY LEFT BLANK

**County Partisan Offices**

**ONLY REGISTERED VOTERS IN COUNTY ARE ELIGIBLE TO VOTE ON THE FOLLOWING**

**Skamania County Commissioner District No. 1**

Brian Nichols  
(Prefers Republican Party)

Mary Ellen Grode  
(Prefers Independent Party)

Write-In  
\_\_\_\_\_

**ONLY REGISTERED VOTERS IN COUNTY ARE ELIGIBLE TO VOTE ON THE FOLLOWING**

**Skamania County Commissioner District No. 2**

Rob Farris  
(Prefers Republican Party)

Mary Repar  
(Prefers Democratic Party)

Write-In  
\_\_\_\_\_

**Judicial Nonpartisan Offices**

**ONLY REGISTERED VOTERS IN JURISDICTION WIDE ARE ELIGIBLE TO VOTE ON THE FOLLOWING**

**Supreme Court Justice Position 2**

Sal Mungia

Dave Larson

Write-In  
\_\_\_\_\_

INTENTIONALLY LEFT BLANK

**Judicial Nonpartisan Offices**

(continued)

**ONLY REGISTERED VOTERS IN JURISDICTION WIDE ARE ELIGIBLE TO VOTE ON THE FOLLOWING**

**Supreme Court Justice Position 8**

Steve Gonzalez

Write-In  
\_\_\_\_\_

**ONLY REGISTERED VOTERS IN JURISDICTION WIDE ARE ELIGIBLE TO VOTE ON THE FOLLOWING**

**Supreme Court Justice Position 9**

Sheryl Gordon McCloud

Write-In  
\_\_\_\_\_

**ONLY REGISTERED VOTERS IN JURISDICTION WIDE ARE ELIGIBLE TO VOTE ON THE FOLLOWING**

**Court of Appeals, Division 2, District 3 Judge Position 1**

Bernard F. Veljacic

Write-In  
\_\_\_\_\_

**ONLY REGISTERED VOTERS IN JURISDICTION WIDE ARE ELIGIBLE TO VOTE ON THE FOLLOWING**

**Superior Court Judge Position 1**

Randall Krog

Write-In  
\_\_\_\_\_

INTENTIONALLY LEFT BLANK

**Local Nonpartisan  
Offices**

**ONLY REGISTERED  
VOTERS IN  
PUBLIC UTILITY DISTRICT  
ARE ELIGIBLE TO VOTE  
ON THE FOLLOWING**

Public Utility District No. 1  
Commissioner District 1

Mel Steele

Dan Boyes

Write-In  
\_\_\_\_\_

**Local Measures**

**ONLY REGISTERED  
VOTERS IN  
FIRE PROTECTION  
DISTRICT 7  
ARE ELIGIBLE TO VOTE  
ON THE FOLLOWING**

Fire District No. 7  
Proposition No. 1  
Property Tax Levy for Fire Protection  
and Emergency Medical Services

The Board of Cowlitz-Skamania  
County Fire Protection District No. 7  
adopted Resolution No. 7-24  
concerning a proposition to maintain  
and adequately fund District  
operations. This proposition  
authorizes the District to restore its  
regular property tax levy to \$1.11 per  
\$1,000 of assessed value to be  
assessed in 2024 and collected in  
2025. The funds will maintain and  
improve fire protection, emergency  
medical services and facilities,  
replace apparatus and equipment,  
and provide for firefighter safety. The  
maximum allowable levy in 2024  
shall serve as the base for subsequent  
levy limitations as provided by  
chapter 84.55 RCW.

Should this proposition be:

Approved

Rejected

INTENTIONALLY LEFT BLANK

**Local Measures  
(continued)**

**ONLY REGISTERED  
VOTERS IN  
SKAMANIA COUNTY  
PARKS AND REC DIST NO.  
1  
ARE ELIGIBLE TO VOTE  
ON THE FOLLOWING**

Skamania County Park and Recreation  
District No. 1  
Proposition No. 1  
Property Tax Authorization

Will the Skamania County Parks &  
Recreation District #1, also known as  
Underwood Park & Recreation District  
(UPRD) be authorized to impose  
regular property tax levies of \$0.20  
per thousand dollars of assessed  
valuation for each of the next six  
consecutive years?

YES

NO

INTENTIONALLY LEFT BLANK

INTENTIONALLY LEFT BLANK